

MERIT BADGE SERIES



FINGERPRINTING





How to Use This Pamphlet

The secret to successfully earning a merit badge is for you to use both the pamphlet and the suggestions of your counselor.

Your counselor can be as important to you as a coach is to an athlete. Use all of the resources your counselor can make available to you. This may be the best chance you will have to learn about this particular subject. Make it count.

If you or your counselor feels that any information in this pamphlet is incorrect, please let us know. Please state your source of information.

Merit badge pamphlets are reprinted annually and requirements updated regularly. Your suggestions for improvement are welcome.

Who Pays for This Pamphlet?

This merit badge pamphlet is one in a series of more than 100 covering all kinds of hobby and career subjects. It is made available for you to buy as a service of the national and local councils of Scouting America. The costs of the development, writing, and editing of the merit badge pamphlets are paid for by Scouting America in order to bring you the best book at a reasonable price.

Send comments along with a brief statement about yourself to
Program Development Department
Scouting America • 1325 West Walnut Hill Lane • Irving, TX 75038 If you
prefer, you may send your comments to merit.badge@scouting.org

SCOUTING AMERICA
MERIT BADGE SERIES

FINGERPRINTING



"Enhancing our youths' competitive edge through merit badges"

Scouting  America.

Requirements

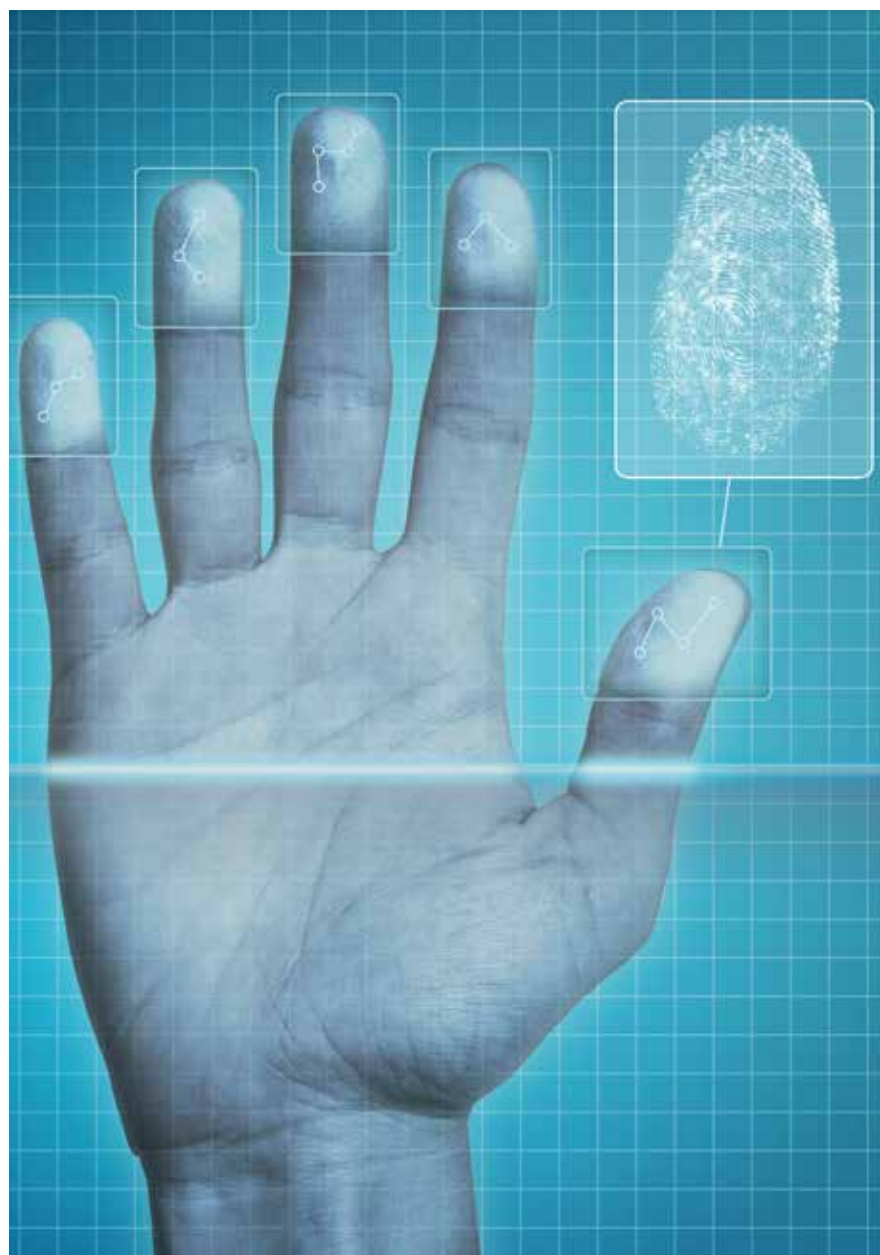
Scouts should go to scouting.org/merit-badges/fingerprinting or check Scoutbook for the latest requirements.



Scan this QR code for the latest Fingerprinting requirements.

Contents

What Is a Fingerprint?	5
History of Fingerprinting	9
Taking Fingerprints	14
Fingerprint Pattern Types	21
Latent Prints	25
Comparing and Identifying Fingerprints	28
Computers and Fingerprints	32
Careers in Fingerprinting	35
Fingerprinting Resources	36
Worksheet for Requirement 5	38



What Is a Fingerprint?

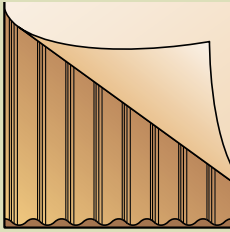
Imagine trying to pick up an ice-cold glass of water using the inside of your arm at the elbow. The smooth skin on the inside of your arm is not designed to grip or create friction the way the ridged skin on your fingers and palms will grip. Using the inside of your elbow, you are more likely to drop the glass than if you use the “friction skin” on your fingers and palms. The friction skin on your toes and the soles of your feet serves the same purpose in giving you traction on slippery surfaces.

When you transfer dirt, oil, ink, or other substances from the friction ridges of your fingers to a smooth surface, you make fingerprints. Just like an ink stamp, the ridges make contact patterns on the surface you touch. The shapes and paths of the tops of the friction ridges appear as lines in a fingerprint.



Fingerprinting is mostly used by law enforcement agencies in investigating crimes, but fingerprints have other uses, too. Law enforcement officers use fingerprints, along with other materials like matching dental records and DNA sampling, to help identify amnesia victims, missing persons, abducted children, and others.

In earning the Fingerprinting merit badge, you will be learning about and using an important technique in law enforcement.



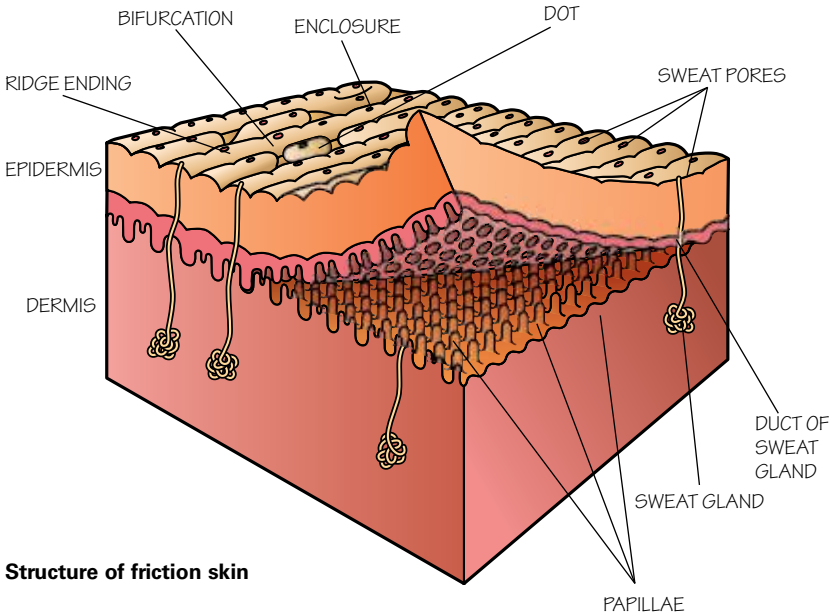
The friction skin covering the undersides of your fingers, palms, soles, and toes resembles the ridges of corrugated cardboard. Peel away the paper covering from a piece of corrugated cardboard to see the alternating ridges and grooves.

Two Basic Principles of Fingerprinting

In the scientific community at large, the following terminology is considered appropriate when speaking of the two basic principles of fingerprints.

Persistence. *Fingerprints never change.* If you draw a face on an uninflated balloon, then fill the balloon with air, the features of the face will grow with the balloon as you blow it up. Fingerprints are similar in that they remain permanent, only growing larger as a baby grows into an adult. The small ridges that form on a person's hands and feet before birth do not change shape as long as that person lives.

Uniqueness. *No two fingerprints are alike.* The ridges on a person's hands and feet have distinctive, individual details that are never repeated on the hands or feet of any other person. In more than 100 years of comparisons of billions of fingerprints worldwide, no two fingerprints have been found to have the same features. Even identical twins have different fingerprints.



Structure of friction skin

The skin has three layers: epidermis, dermis, and (not shown in this illustration) subcutaneous tissue. The *epidermis*, the outermost layer, is about as thick as a sheet of paper over most of the body. The *dermis*, the middle layer, is between 15 and 40 times as thick as the epidermis. The surface of the dermis has many tiny “pegs,” the papillae, that fit into pits on the underside of the epidermis. The *papillae* help fasten the dermis to the epidermis.

Friction ridges are technically known as *papillary ridges*. Scrapes, cuts, and other minor injuries do not change the ridge structure or the papillae; the original ridge pattern reappears in any new skin that grows.



History of Fingerprinting

People have long been aware of the ridge patterns on their fingers and palms. On a cliff face in Nova Scotia, prehistoric “picture writing” shows a hand with ridge patterns. For centuries the Chinese used thumbprints to seal documents.

In 14th-century Persia, official government papers were impressed with fingerprints. One government official, a physician, observed that no two people’s fingerprints were exactly alike.

Despite this early awareness that fingerprints were individual and unique, the scientific approach to fingerprinting did not begin for another three centuries. Here is a summary* of the major scientific observations that have led to the modern science of fingerprinting.

Marcello Malpighi — 1686

During his studies of human skin, Italian anatomist and physician Marcello Malpighi used a microscope to study and describe the ridges, spirals, and loops in fingerprints. While his work was invaluable in the early use of the microscope, Malpighi made no mention of the value of fingerprints as a tool for identifying individuals.

Johannes Evangelista Purkinje — 1823

Johannes Purkinje, a Czech physiologist, created a classification system for the variety of friction ridge patterns, but his system failed to generate much interest in the value of using fingerprints for personal identification.

William Herschel — 1858

The English began using fingerprints in 1858 when Sir William Herschel, a British official in India, had a businessman press his handprint on the back of a contract to discourage the man from not honoring the agreement. The locals believed this personal contact with the document made the contract more binding than if they had simply signed it. Herschel began requiring

*Much of the information in this section was adapted from <http://onin.com/fp>.

palm prints—and later, simply the prints of the right index and middle fingers—on every contract.

Herschel's experience in India suggests that the first wide-scale, modern-day use of fingerprints was based on superstition, not science. However, as Herschel's fingerprint collection grew, he began to see that the inked impressions could, in fact, prove or disprove identity. He widened his use of fingerprints, convinced that the prints were unique to the individual and permanent throughout that individual's life.

Henry Faulds—1880

During the 1870s, Dr. Henry Faulds, a Scottish physician working in Japan, not only recognized the importance of fingerprints for identification, but also created a method of classifying prints. In 1880, the scientific journal *Nature* published Faulds' article about using fingerprints for personal identification and using printer's ink for taking prints. Faulds is credited with the first fingerprint identification, of a greasy print left on an alcohol bottle.

In 1880, Henry Faulds sent Charles Darwin an explanation of his classification system and a sample of the forms he designed for recording inked impressions. Darwin later passed the materials on to his cousin, Francis Galton.

Gilbert Thompson—1882

In 1882, geologist Gilbert Thompson became the first American to use fingerprints for identification. He printed his own fingerprints on documents to prevent other people from forging his work.

Mark Twain—1883

Author Mark Twain, whose real name was Samuel L. Clemens, brought fingerprinting into the literary world with his 1883 book *Life on the Mississippi*, in which a murderer is identified by his thumbprint. Twain's 1894 novel, *Pudd'nhead Wilson*, describes a dramatic fingerprint identification during a court trial.

Francis Galton—1892

In the 1880s, Sir Francis Galton, a British anthropologist and cousin of Charles Darwin, began his studies of fingerprints as a means of identification. In 1892, Galton published his book, *Finger Prints*, describing the uniqueness and persistence of fin-

gerprints. Galton was able to scientifically prove what Herschel and Faulds already suspected: that fingerprints are permanent and unique to each individual. According to Galton's calculations, the odds of two individual fingerprints being the same were 1 in 64 billion.

Juan Vucetich — 1892

In 1891, Juan Vucetich, an Argentine police official, began the first fingerprint files based on Galton pattern types. In 1892, Vucetich made the first criminal fingerprint identification. He was able to identify a murder suspect from bloody fingerprints at a crime scene.

The Henry System — 1901

In 1901, fingerprints began to be used for criminal identification in England and Wales. The classification system was based on Galton's observations, as revised by Sir Edward Richard Henry. This began the Henry Classification System, which is still used today for noncomputerized fingerprint files in English-speaking countries.

First Uses in the United States — 1902–1903

Systematic fingerprinting was introduced in the United States in 1902 when the New York Civil Service Commission began fingerprinting its job applicants. In 1903, the New York State prison system became the first agency in the United States to regularly use fingerprints to identify criminals.

Fingerprint Bureaus — 1904

The penitentiary at Leavenworth, Kansas, and the St. Louis Police Department established fingerprint bureaus in 1904. The Leavenworth bureau became the first to operate on more than a local basis. It gradually began to offer a free fingerprint exchange service among a growing list of participating law enforcement officers.

First American Military Use — 1905

The U.S. Army adopted a fingerprint system for its soldiers in 1905. Two years later the U.S. Navy started using fingerprints, followed by the Marine Corps in 1908.

FBI Identification Division — 1924

In the early years of the 20th century, more and more law enforcement agencies began using fingerprint systems. In 1924, Congress established the Identification Division of the Federal Bureau of Investigation. More than 810,000 fingerprint cards were collected from other agencies to form the core of the FBI fingerprint files.

Francis Galton defined characteristics by which fingerprints can be identified. These same basic characteristics (*minutia*) are still in use today. They are often referred to as "Galton's details."

International Exchange— 1932

The FBI Identification Division began to exchange fingerprint information with foreign countries in 1932.

First Print Taken From Human Skin— 1979

In a 1979 Miami, Florida, murder case, a latent (invisible) fingerprint lifted from the victim’s hand led to the identification of the suspect. This was the first case in which a fingerprint was taken from human skin and successfully used to identify and convict a criminal.

In this video, the FBI shows the story of how its Criminal Justice Information Services division evolved from manual methods for filing and matching fingerprints taking weeks to computers that process fingerprints in seconds or minutes: [fbi.gov/video-repository/newss-from-fingerprints-to-a-new-era-of-biometrics-1/view/](https://www.fbi.gov/video-repository/newss-from-fingerprints-to-a-new-era-of-biometrics-1/view/).

Today, the FBI has more than 250 million sets of fingerprint records.

Integrated Automated Fingerprint Identification System— 1999

Today, computers perform fast electronic searches for fingerprint matches. In 1999, the FBI implemented its 21st-century Integrated Automated Fingerprint Identification System (IAFIS), which allows users to quickly scan every fingerprint card in the FBI criminal files. Whereas a single physical search through fingerprints on paper cards could take 40 days, the IAFIS can do it in two hours or less. The system also allows users to electronically transmit fingerprint data quickly, eliminating the need to exchange paper cards.

The Automated Fingerprint Identification System is the first phase of IAFIS development. When this technology was introduced in 1999, the fingerprint files were split into computerized criminal files and manually maintained civil files. The fingerprints of people who have been charged with serious crimes are in the criminal files. AFIS computers compare submitted fingerprints against approximately 70 million criminal files.

Fingerprint Processing Today

In 2011, the FBI began a multi-year Next Generation Identification (NGI) project to expand the capabilities of



Scouts learn how law enforcement agencies use computers to operate the Automated Fingerprint Identification System.

and to replace the IAFIS. The NGI system allows fingerprint matching to 99.6% accuracy, faster response times of less than 10 seconds, palm print searches, photo storage from state repositories, facial recognition searches, and iris searches. In January 2024, the FBI received an average of more than 170,000 fingerprint sets daily.

The IAFIS is the largest person-centered database in the world with more than 40 million records, providing automated fingerprint searches and exchanges and text searches of descriptive information.

A Fingerprint Jigsaw

A man was arrested for trying to enter the United States illegally. His fingerprints showed he had intentionally scarred his fingertips, which raised suspicion immediately: Why would he do that unless he had something to hide?

Suspicious authorities sent the suspect's prints to the FBI, where a fingerprint examiner discovered that the man had had several triangles of skin cut from each finger and surgically rearranged. The examiner enlarged the prints, cut them apart, and pieced them back together in their original positions like a jigsaw puzzle.

The rebuilt prints matched a set in the FBI's vast fingerprint files, identifying the man as a fugitive who had been convicted on a drug charge years earlier. If the man had been able to hide his true identity, he would have served no more than six months for having an illegal passport, rather than the 25-year sentence he got for the drug conviction.

Taking Fingerprints

Some fingerprinting systems use a preinked pad instead of a roller and inking plate. In another system, the ink is applied from a sheet of film that is coated with black printer's ink. An inkless system uses a chemical to make fingerprint impressions. An advanced method uses a computerized live-scan device for recording fingerprints.

Your Fingerprinting merit badge counselor may arrange for you to do your fingerprinting at the local police station, at a unit meeting, or at another convenient location. Your counselor may provide the necessary equipment.

If you or your unit choose to assemble your own equipment, you can use it for demonstrations at unit meetings or Scouting shows.

Several types of equipment can be used. The oldest fingerprinting method uses a tube of black printer's ink, a roller, an inking plate, 8-by-8-inch personal identification fingerprint cards, and possibly a card holder. The card holder is not essential, but it helps hold the fingerprint card in place while printing so that the prints do not blur or smudge.

You may complete requirement 4 for the Fingerprinting merit badge by recording a set of fingerprints using a conventional fingerprint card or using lifting tape. Both methods are described here.





Using Lifting Tape

To take fingerprints using lifting tape, you need a sheet of white paper, a pencil, and clear adhesive tape ($\frac{3}{4}$ -inch tape works better than $\frac{1}{2}$ -inch tape). Follow these steps.

Step 1—Draw a 2-by-1-inch rectangle near one corner of the paper.

Step 2—Using the long side of the pencil lead, blacken the rectangle, as black as you can make it.

Step 3—Thoroughly rub your thumb or the bulb of a finger on the black rectangle.

Step 4—Apply a piece of adhesive tape to the coated (gray) area of your thumb or finger, working smoothly from the tip down or from the first joint up.

Step 5—Touching as little as possible of one corner of the tape, peel the tape off. Carefully stick it on your paper. Alongside the fingerprint, write what hand and finger it came from.

Repeat steps 1 through 5 until you have taken a clear, complete set of prints from one hand.

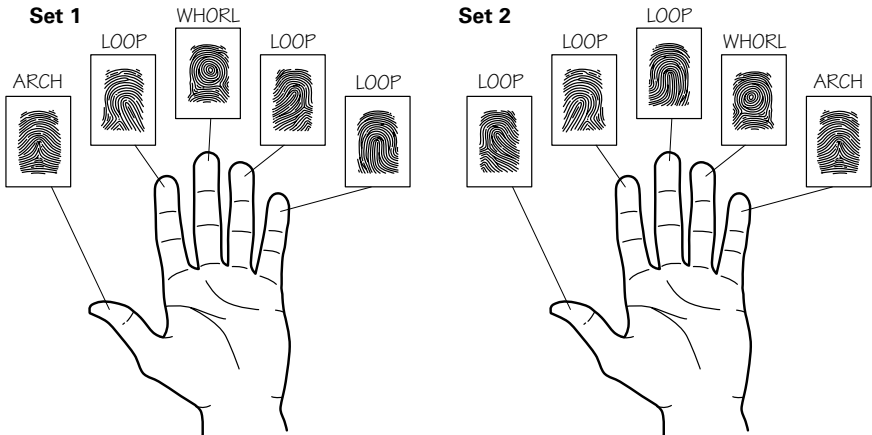


Using Fingerprint Cards

When you have learned the three basic types of fingerprint patterns (see the next chapter, "Fingerprint Pattern Types"), identify and label your fingerprints by pattern type.

To make rolled and plain impressions on a fingerprint identification card, you need the following equipment.

- *Black printer's ink* gives the best results because it dries quickly. You can handle fresh work immediately with little danger of smudging. Plain writing ink or ordinary stamp-pad ink is not satisfactory; prints taken with such inks usually are illegible.
- The *roller* best suited to fingerprinting work is similar to the rubber roller that printers use to apply ink to the press.
- A *metal plate or an ordinary piece of glass* $\frac{1}{4}$ inch thick, 6 inches wide, and 12 to 14 inches long makes a good inking plate.
- You will need *cleansing fluid and a cloth* to prepare the subject's fingers and to clean the roller and inking plate thoroughly after each use. Denatured alcohol works well as a cleansing fluid.
- You can get *paper fingerprint cards* from your local police department. Be sure to ask for the personal identification type.



The drawing shows two sets of fingerprints, taken from the left hands of two different people. Notice that each set has three loop patterns, one arch pattern, and one whorl, but the order of the patterns in each set is different. The order of the patterns helps to identify different people.

Just how much pressure to apply in inking and taking rolled impressions is important. You learn this best by experience and observation. Tell the subject to relax and not try to help you by exerting any pressure. If the subject does apply pressure, you cannot gauge or estimate the pressure on the paper, and you will get blurred results.



Ink the finger evenly. Roll thumbs toward and fingers away from the center of the subject's body.



Roll the inked finger on the card in the same way you applied the ink. If you want, practice on plain paper first.



Printing a rolled impression

Making Prints

Position the inking plate at a height that lets the subject's forearm be horizontal while the fingers are being inked. The subject's arm may be placed on the edge of a counter or a table of counter height. With the arm in such a position, you can avoid strain and pressure on the fingers and you should be able to make uniform impressions.

Take finger impressions on 8-by-8-inch fingerprint cards, a size that has been generally adopted because the cards are easy to file. Complete the form as shown on the previous page.

The illustration shows two types of impressions. The upper 10 prints are taken individually and are known as *rolled impressions*. The smaller prints at the bottom of the card are taken by printing the thumbs separately but printing all the fingers of each hand together. These are called *plain impressions* and are used as a check on the rolled impressions.

ROLLED IMPRESSIONS

To start printing, place a small daub of printer's ink on the inking glass or plate. Roll it thoroughly with the roller until a thin, even film of ink covers the plate's entire surface.

Have the subject stand in front of and at forearm's length from the inking plate. Place the entire first joint of the finger upon the inking plate, with the plane of the fingernail at right angles to the plane of the plate. Roll the finger from one side of the fingernail to the other, in one continuous movement. *Do not roll it back and forth.* Take care to see that the finger is inked evenly from the tip to just below the first joint.

Then lift the finger to the card and roll it using the same technique, until the bulb of the finger faces the opposite direction. Always roll the thumbs toward and the fingers away from the center of the subject's body. This leaves the fingers relaxed at the completion of rolling, so they may be raised easily from the printed surface without danger of smudging the impression.

By pressing the finger lightly on the card and rolling as just described, you can get a clear impression of the finger. You get the best results by inking and printing each finger separately, beginning with the right thumb and then, in order, the index, middle, ring, and little fingers.

PLAIN IMPRESSIONS

To take plain impressions, lightly press all the fingers of the right hand on the inking plate, then press them simultaneously at a 45 degree angle on the card in the space provided. After doing the same thing with the left hand, ink and print the thumbs of both hands.

Finishing the Card

There is more to do in preparing a fingerprint card than just taking the subject's finger impressions. You must type or plainly print the subject's name, age, date of birth, sex, and other identifying information on the fingerprint card, as soon as possible after fingerprinting.

If any of the subject's fingers are amputated, mark the space for the missing finger "AMP." If any of the fingers cannot be printed because of cuts, burns, or bandages, print them later.

Prints of all the person's fingers are necessary to complete the classification by which a set of fingerprints may be filed and then retrieved in the future.



To record plain impressions, ink fingers as shown; do the same with the thumb.



Print the plain impressions by placing inked fingers on the card at the same time.



Loop



Whorl



Arch



Loop scan



Whorl scan



Arch scan



Accepted



Rejected



Damage



Password



Scanning



Fingerprint

Fingerprint Pattern Types

Fingerprints are classified into three basic types—*loops*, *arches*, and *whorls*—based on the patterns made by the ridges that cover the skin of the fingertips. Learning to recognize these general patterns and their subcategories is not hard. Study the examples shown in this pamphlet, then complete the worksheet found on page 38 to show your counselor you can identify the three basic types of fingerprint patterns. Also identify the pattern types of your own fingerprints.

Loops

In the loop pattern, the ridges begin on one side of the finger, curve or turn back sharply, and end on the same side. The loop may slope or “lean” toward either the thumb or the little finger.

If you can identify the two bones in your forearm—the radius and ulna—then you can remember the two subcategories of loops. The ridges of a *radial* loop begin and end on the same side of the hand as the thumb (or the radius, the bone that is on the inside of the arm). The ridges of an *ulnar* loop begin and end on the outside of the hand (closest to the ulna). You must know which hand a loop print is from to correctly identify it as a radial loop or an ulnar loop.

The loop is the most common fingerprint pattern. Loops make up about 65 percent of all fingerprints.



LOOPS

Arches

In an arch, the ridges enter from one side of the pattern and flow or tend to flow out the other side. If the ridges have a slight rise or wave in the center, the pattern forms a *plain* arch. In a *tented* arch, the ridges at the center make a taller, more definite angle or upthrust.

The plain arch is the simplest of all fingerprint patterns and it usually is easy to identify. Tented arches can sometimes be confused, however, with forms of the loop pattern. To tell the two patterns apart, remember that a ridge must curve sharply back on itself to make a loop. A ridge that flows from one side of the fingerprint impression to the other, even if it rises noticeably in the center, forms an arch, not a loop. Study the illustrations of arches and loops until you are able to recognize the differences between them.

The arch is the least common type of fingerprint pattern. Only 5 percent of fingerprints are arches.



PLAIN ARCH



TENTED ARCH

Whorls

In a whorl pattern, the ridges form circles, spirals, or ovals. Whorls make up about 30 percent of all fingerprint patterns.

The *plain* whorl consists of one or more ridges that make a complete circuit. It can be best identified by looking for two deltas, or the point near the outside of the pattern where two ridges diverge. The delta is so named because it looks like the formation at the mouth of a river that you may remember from your study in geography. If an imaginary line is drawn between the two deltas in a plain whorl, it will dissect or touch at least one of the ridges in the complete circuit.

The *central pocket loop* is similar to the plain whorl with its recurving ridges, but this loop features an “obstruction” that appears at right angles to the direction in which the pattern flows. The central pocket loop also has two deltas, but an imaginary line drawn between them would not cut or touch the recurving ridge.

The *double loop* type of whorl pattern consists of two separate loop formations. The pattern is marked by two deltas and two separate and distinct sets of shoulders, or where the loop pattern seems to dead-end.

A fingerprint identified as an *accidental* whorl contains two or more distinct types of patterns with two or more deltas, or a pattern that has some of the requirements for two or more different types, or a pattern that conforms to none of the definitions.



PLAIN WHORL

CENTRAL
POCKET LOOP

DOUBLE LOOP



ACCIDENTAL



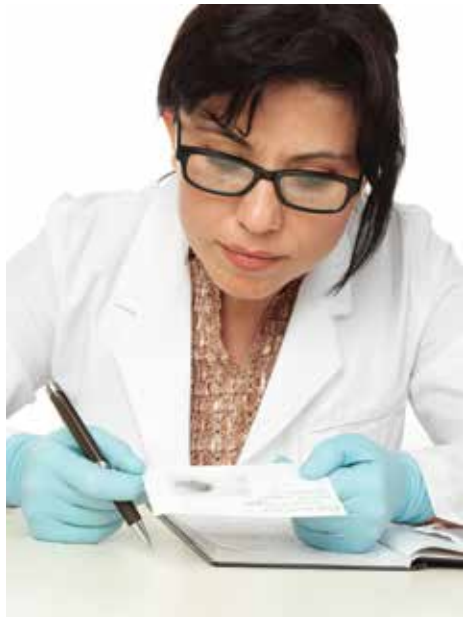
Latent Prints

If you have something on your hands—mud, wet paint, ink, grease, dirt, chocolate, blood—and you touch an object, you will leave a visible fingerprint. *Visible* prints are out in the open and easy to see.

Touch a substance like softened soap, putty, wax, or tar—some squishy material your fingers sink into—and you will leave your fingerprints pressed into the material. This type of fingerprint impression is called *plastic*. It also is a visible print; it is easily seen.

Handle an object with your clean, bare hands and you will leave faint, invisible fingerprints on it. Invisible or “hidden” prints are called *latent* fingerprints.

In a criminal investigation, police experts search a crime scene looking for latent fingerprints. When the police are able to find and recover these latent prints, they can use them to identify the suspect, if the person’s prints are in police files. A fingerprint specialist compares latent prints recovered from a crime scene with the known (inked) fingerprints of suspects in the case or of other people who might have left the impressions.



Comparing a fingerprint found at a crime scene with impressions taken from a suspect is a highly skilled job. Most police forces have specially trained officers who do the work.

How the Process Works

To earn the Fingerprinting merit badge, you do not have to know how the police recover fingerprints left at the scene of a crime. But the process is interesting, and learning about it will help you better understand the value of fingerprinting in law enforcement.

The human body naturally gives off perspiration and oils. Sweat pores dot the friction ridges on the fingers and palms, and a little perspiration builds up on the ridges. Sweat is about 99 percent water, but it also contains solids such as salt and acids.

Anytime people touch an object with their bare hands, they transfer some perspiration and body oils to the object, leaving a fingerprint or palm print. These prints are latent prints—usually they are invisible or only partially visible.

Latent impressions on hard surfaces such as glass, metal, or furniture can be *developed* (made visible) by dusting with fine powder. The fingerprint expert uses the tip of a brush to carefully apply a colored powder to the surface. The powder sticks to the oils in the print and makes the print show up.

When the latent print becomes visible, it can be photographed for preservation. The print also can be “lifted” from the surface with sticky tape and fixed onto a card as a permanent record.

Latent prints on porous surfaces such as paper, cloth, and unpainted wood may be chemically developed. Different chemicals react with different substances that may be in the print, such as oil or fat, acids, or salt. The reactions make a colored image show up; this image then can be photographed.

Special X-ray techniques can make fingerprint impressions on skin become visible. Some latent prints can be developed only with a laser, a device that emits a powerful ray of light. The laser light makes the perspiration in a fingerprint shine, and while it shines the print can be photographed.



You can try dusting for fingerprints using the techniques described on the following page.

Dusting for Prints

Do you want to try dusting for prints, the way a fingerprint specialist would at a crime scene?

You will need:

- 1 clean, clear glass or plastic cup, or a clean jar such as a baby-food jar, wiped clear of fingerprints
- 1 small container of talcum powder or graphite powder
- 1 feather or a soft brush
- Adhesive tape
- Construction paper (black if you use talcum powder; white if you use graphite powder)
- Magnifying glass

Step 1—Rub your finger on your nose to get more oil on your finger.

Step 2—Carefully put your other hand inside the vessel (the glass, cup, or jar) to hold it still. Then touch your oily finger to the outside of the vessel to make a fingerprint. Do not otherwise touch the outside of the vessel.

Step 3—Look for the fingerprint you just made. Can you see it?

Step 4—Now dust or tap a tiny amount of talcum or graphite powder onto the print. Use the brush or the bottom half of the feather (the part closest to the quill) to smooth the powder gently and evenly over the print. Gently blow off any excess powder.

Step 5—Stick a small piece of adhesive tape to the print. Holding the tape by one corner, carefully lift it off. The print should come up with the tape.

Step 6—Stick the print on black construction paper if you used talcum powder, or on white construction paper if you used graphite powder.

Step 7—Use a magnifying glass to examine the print. What pattern type is it?

Prints that are already visible—those made by dirty hands or pressed into a soft, yielding surface—are photographed as they are. They do not need to be developed with powder or chemicals or by other means.

Comparing and Identifying Fingerprints

Just as you can see an overall view of a plowed farm field from an airplane, you can easily see the general ridge flow or pattern shape of a fingerprint, often without needing a magnifying glass. An overall view of a fingerprint will show parallel ridge lines in typical loop, arch, or whorl shapes. If you are comparing two fingerprints and you can see that the basic pattern or ridge flow shape of the two prints is quite different, then you know the two impressions are not from the same finger (or the same palm, foot, etc., if you are comparing palm prints, footprints, etc.).

If the two prints have the same general ridge flow or pattern shape, the next step is to compare the details of the two impressions: the ridge endings, *bifurcations* (Y-shaped deltas in which one ridge splits into two), dots (very short ridges that look like dots), and combinations of these features. The fingerprint expert looks closely at the latent (unidentified) impression, selects a small group of its features, and memorizes their relationship to each other and to the ridge flow. Then the expert compares those features against an inked (known) impression to see whether the same features exist in the same relationship to each other. If they are present in both impressions, these features are used like road maps to determine the presence or absence of additional similarities between the impressions.



Fibers, Flecks, Fingerprints: Forensics

Forensic scientists apply science to the detection of crime. Forensic scientists known as *criminalists* use their knowledge of science to analyze the physical evidence of a crime—evidence that can include not only fingerprints but also fibers, hair, bloodstains, broken glass, twisted metal, wood splinters, paint flecks, and handwriting samples. Physical evidence may be anything: evidence as big as an airplane, or so tiny you would need a microscope to see it.

Criminalists try to link pieces of evidence together to show how a crime was committed, or—sometimes—to help prove that a crime really occurred. Forensic scientists are sharp thinkers, good with details, good at putting pieces of a puzzle together, and endlessly curious.

Does that describe you? If you want to learn more about becoming a criminalist, here are a few things you can do now to explore this career field.

- Contact your local police department and ask if you can tour the crime lab.
- In school, take courses in chemistry, biology, physics, math, and English composition. You will need to be good in science and also good at writing an understandable scientific report.
- Practice taking fingerprints, using the methods described in this pamphlet. Compare different sets of prints and see if you can correctly identify them.

Beyond this level of detail, even finer features of unique ridge shape and thickness, and the location and shape of individual sweat pores (seen as small white circles on some fingerprint ridges), are used in comparison and identification.

Human skin is flexible, and people move. Fingerprints left at the scene of a crime may be blurred and incomplete, unlike the carefully inked impressions set out in the numbered boxes of a fingerprint card. Because of these factors, there will always be some dissimilarities between any two fingerprints made by the same finger. Fingerprint experts study the nature of friction-ridge impressions for years to understand what are normal variations and what are unexplainable differences caused by truly different fingers.

For an identification to be made, the friction-ridge details from two impressions must match without *any* unexplainable dissimilarities. Even one unexplainable difference means the fingerprints are not from the same finger.

No minimum amount of area or minimum number of features or points is required to make an identification. Often, an area as small as the tip of a pencil eraser may be identified, if the friction-ridge detail that is present is clearly represented.

Lost and Found

From a phone booth in a southwestern city, a man called the police, asking for help. When the officers arrived, they found a tall, young, red-haired man waiting for them. He had a gun in a shoulder holster and he told police he did not know who he was or where he came from. The police took the man's fingerprints and sent them to the FBI. The FBI matched the prints with a set that had been taken when the young man enlisted in the Navy, 11 years before. Using this information, the police were able to tell the amnesia victim his name and give him many details of his forgotten life.

If the quality of the impression is poor, then a larger area of detail may be required before an identification is possible.

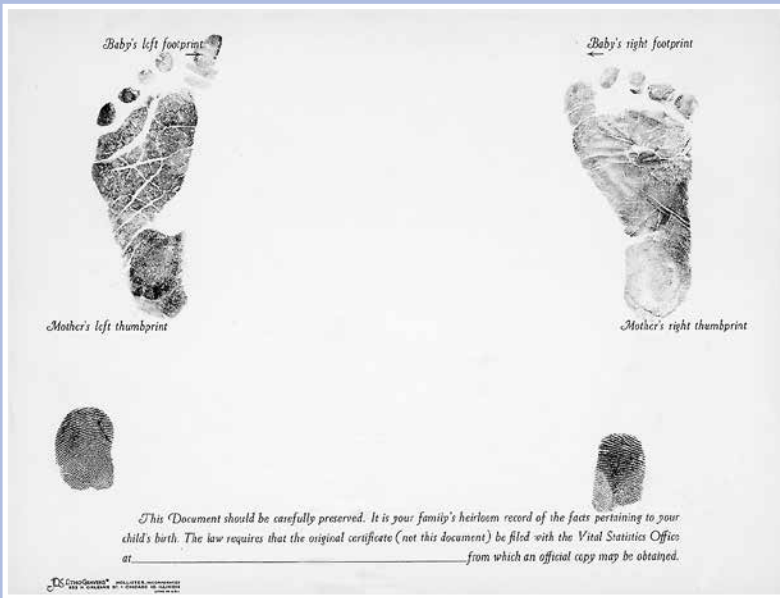
Civil Versus Criminal Identification

Fingerprinting is usually associated with police work. Identifying the parties who commit crimes is *criminal* identification. But fingerprinting has other uses, too.

Missing persons, amnesia victims, casualties of war, and people killed in catastrophes such as explosions, fires, airplane crashes, epidemics, floods, and hurricanes may be positively identified by fingerprints. Often, if there are no known inked fingerprint records of a person killed in a disaster, it is possible to find latent prints on personal belongings at the victim's home or business. By comparing these latents with prints taken from the deceased, experts may make positive identifications.

This type of identification is known as *civil*—involving the general public. Several states allow children to be fingerprinted to help police identify them if they get lost or are missing. People enlisting in the military, applying for gun permits, and seeking jobs in law enforcement, government, and child care are also usually fingerprinted.

It is fascinating to realize that the ridges we all have on our fingers, palms, toes, and soles can be used to identify the criminal, to clear the innocent, and to give back something precious—their names—to missing persons, lost relatives, disaster victims, and the unknown dead.



Fingers are not the only body surfaces that have distinctive ridges. Ridges also occur on the toes, soles of the feet, and palms of the hands. Shown here is a hospital record of a new baby's footprints.

Computers and Fingerprints

Biometric means “life measuring,” and fingerprints are only one of many unique features of human beings that can be measured and compared. Some other biometric methods measure hand shape, eyes, and faces.

Today, computers greatly simplify the process of analyzing and identifying fingerprints. Computers work with fingerprints in two different ways:

- *Automated Fingerprint Identification Systems* are used to help positively identify people from records in large fingerprint files.
- *Biometric fingerprint systems* are used to help control access and stop unauthorized people from entering a building, for example, or using a computer system.

The main difference in the two methods is that the AFIS gives positive identification of a fingerprint in a file of thousands or millions of records. Biometric systems usually determine only that a fingerprint is somewhat similar (not necessarily a positive match) when compared against one fingerprint registered to that person.

AFIS

Most police and government agencies with large fingerprint files use the Automated Fingerprint Identification Systems to make fast comparisons and positive identifications in a database of millions of fingerprints. Before the AFIS, it was necessary for police to carefully classify or group fingerprint records according to complicated rules, to avoid having to compare the thousands of fingerprint



records already on file against each fingerprint card or crime-scene fingerprint received.

Using computers, thousands of comparisons per second can be made and it is no longer necessary to limit searches to only a small portion of the entire file. Dividing fingerprint files into small sections using elaborate rules based on the person's sex; age; presence of scars; presence of whorl, loop, and arch formations in various fingers; and other intricate classification steps are no longer required. The AFIS generally uses only loop, arch, and whorl pattern classifications. These are the same three pattern types you learn in earning the Fingerprinting merit badge.

A person may be positively identified from only one fingerprint, or even from a portion of one fingerprint. The purpose of having all 10 fingerprints on fingerprint cards was historically *not* because all 10 fingers were completely compared against each other to make an identification. All 10 fingers had to be on record for the complicated classification formulas to work, so that only a small part of a large fingerprint file (that portion with similar pattern features on each finger) needed to be searched.

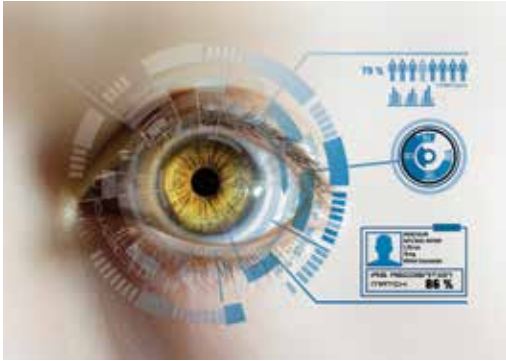


Biometric Systems

Some banks, military bases, and government buildings, among others, have computers that check the fingerprints of employees before letting people into certain areas. These biometric access systems are designed to control access, and they keep people out about like a combination lock. The chance that an unauthorized person might be able to guess the combination for a padlock is small. Similarly, the chance is small that an unauthorized person will have a fingerprint similar enough to an authorized person's finger to fool a biometric system.

Biometrics in our Society

People can identify themselves for access and for privileges in several general ways. Token-based identification systems include driver's licenses and passports. Knowledge-based identification systems include a computer password, a personal identification number, and security questions for password recovery.



The iris of the eye has been described as an ideal part of the body for biometric identification (this is a photo illustration of what the data might look like to a scientist or investigator).

Because biometric identifiers are unique to individuals, biometric identification systems are more reliable than token- or knowledge-based systems. Biometrics are body measurements used to identify people. Biometrics can include behaviorometrics, namely, measurements of patterns of behavior of individuals, such as gait, signature, voice, typing rhythm, and mouse movements.

Fingerprints are a prime example of biometrics. U.S. embassies and consulates

abroad collect electronic fingerprints of all 10 fingers and a digital photo when they issue visas to travelers to the United States. These procedures reduce the use of stolen and counterfeit visas and prevent terrorists and criminals from entering the U.S. Collecting fingerprints when a visa is created and verifying fingerprints at a port of entry make travel and American security safer.

Other biometric body measurements used for identification include patterns of palm prints, palm veins, hand geometry, retinal arteries and veins, iris scans, and face measurements and shapes.

These systems can enhance security of access to computer systems and their data and to buildings, laboratories, and warehouses. They can confirm identity for access to medical records and bank accounts and for proper use of travel documents.

Careers in Fingerprinting

People with knowledge and skills related to fingerprinting are valuable employees in government agencies or companies using scientific techniques to investigate crimes and examining evidence for presentation in a court of law. Fingerprint technicians, officers, and analysts play important roles in recording fingerprints manually and electronically for identification systems and for crime-related situations. They are experts in record keeping and managing computer imaging and processing systems. They may participate with other service personnel to identify victims of mass disasters or of war.

Crime scene investigators usually work for law enforcement agencies. They collect evidence of many types, including fingerprints, at crime scenes and suspected crime scenes, such as fires where the crime of arson might be the cause. Their work is usually in the field. They support forensic scientists and engineers and pathologists in their laboratory studies of evidentiary materials that they collect.

Forensic scientists, engineers, and pathologists are based in laboratories or testing sites. They hold college and postgraduate degrees in science, having studied biology, chemistry, physics, and medicine. After graduate school, they often will have completed internships with military or government agencies or university training programs. Some may have training in fields of computer science like image processing and manipulation, data storage, and artificial intelligence.

A forensic investigator, also known as a crime scene investigator (CSI), is a law enforcement professional who collects and analyzes evidence to help solve crimes.



Fingerprinting Resources

Scouting Literature

Chemistry, Crime Prevention, Law, and Photography merit badge pamphlets

With your parent or guardian's permission, visit Scouting America's official retail site, scoutshop.org, for a complete list of merit badge pamphlets and other helpful Scouting materials and supplies.

Books

- Beres, D.B. *Dusted and Busted! The Science of Fingerprinting*. Children's Press, 2007.
- Bertino, Anthony J., and Patricia Bertino. *Forensic Science: Fundamentals and Investigations*, 2nd ed. Cengage Learning, 2015.
- Camenson, Blythe. *Opportunities in Forensic Science Careers*, 2nd ed. McGraw-Hill, 2008.
- Deslich, Barbara, and John Funkhouser. *Forensic Science for High School*, 2nd ed. Kendall Hunt, 2009.
- Evans, Colin. *The Casebook of Forensic Detection: How Science Solved 100 of the World's Most Baffling Crimes*, updated ed. Berkley Trade, 2007.

Rainis, Kenneth G. *Crime-Solving Science Projects: Forensic Science Experiments*. Enslow, 2005.

Schulz, Karen K. *CSI Expert! Forensic Science for Kids*. Prufrock Press, 2008.

Siegel, Jay. *Forensic Science: A Beginner's Guide*. Oneworld Publications, 2009.

Thompson, Robert Bruce, and Barbara Fritchman. *Illustrated Guide to Home Forensic Science Experiments*. Maker Media Inc., 2012.

Vacca, John. *Biometric Technologies and Verification Systems*. Butterworth-Heinemann, 2007.

Young, Karen Romano. *Science Fair Winners: Crime Scene Science*. National Geographic Kids, 2009.

Organizations and Websites

American Academy of Forensic Sciences

aafs.org/careers-forensic-science

The Fingerprint Sourcebook

Published by U.S. Department of Justice, Office of Justice Programs
ojp.gov/pdffiles1/nij/225321.pdf

Acknowledgments

For assistance with updates to the *Fingerprinting* merit badge pamphlet and the requirements, Scouting America thanks Ed German, a certified latent print examiner (CLPE) who works on fingerprint evidence cases for American military investigators from his office at the U.S. Army Criminal Investigation Laboratory. Special Agent German serves as a Fingerprinting merit badge counselor.

We also thank Lisa Vincent Stout, art and information specialist, Criminal Justice Information Services Division, Federal Bureau of Investigation; and Charles Jones, training supervisor, Identification and Investigative Services Section, FBI. Thanks also to WRB Fingerprint Counseling Service, Springfield, Virginia, and to the police departments of Edison and New Brunswick, New Jersey, for their past assistance.

Scouting America is grateful to the men and women serving on the National Merit Badge Subcommittee for the improvements made in updating this pamphlet.

Thanks go out to Bill Litton and to Dan Ferguson for their contributions to the 2025 review and update.

Photo and Illustration Credits

Coppell, Texas, Police Department,
courtesy—page 17 (*both*)

Getty Images—pages 34 and 35

HAAP Media Ltd., courtesy—cover
(*handprints, blue fingerprint,
dusting brush/powder/print*)

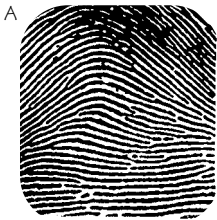
All other photos and illustrations not mentioned above are the property of or are protected by Scouting America.

Dan Bryant—cover (*fingerprint card*)

John McDearmon—pages 6, 7, 8,
and 16

Worksheet for Requirement 5

Shown on this page are the three basic fingerprint pattern types. For each type, two typical examples are given. Fill in the blanks beside each pattern type at the bottom of the page with the two letters identifying examples of that type.



1. Loops
 _____ and _____
2. Arches—plain and tented
 _____ and _____
3. Whorls—plain, central pocket loop, double loop, and accidental
 _____ and _____

Notes

UP YOUR MERIT BADGE GAME



Get ahead in Scouting with *Scout Life* magazine. It's loaded with the latest news on merit badges and other advancement tools. Plus, it's got outdoor adventure, games and comics, leadership tips, life skills, stories about other Scouts and more. It's just what you need to succeed.

Subscribe today at go.scoutlife.org/subscribe

Use promo code **SLMBP15** to get a special offer priced just for Scouts.

MERIT BADGE LIBRARY

Though intended as an aid to youth in Scouts BSA and qualified Venturers and Sea Scouts in meeting merit badge requirements, Scouting America's merit badge pamphlets are of general interest and are made available by many schools and public libraries.

Always check [scouting.org](https://www.scouting.org) for the latest merit badge requirements. If a Scout has already started working on a merit badge when new requirements for that merit badge are introduced, *they may continue to use the same pamphlet to earn the badge and fulfill the requirements therein*. In other words, the Scout need not start over again with the revised requirements.

American Business	Exploration	Plant Science
American Cultures	Family Life	Plumbing
American Heritage	Farm Mechanics	Pottery
American Indian Culture	Fingerprinting	Programming
American Labor	Fire Safety	Public Health
Animal Science	First Aid	Public Speaking
Animation	Fish & Wildlife Management	Pulp & Paper
Archaeology	Fishing	Radio
Archery	Fly-Fishing	Railroading
Architecture	Forestry	Reading
Art	Game Design	Reptile & Amphibian Study
Astronomy	Gardening	Rifle Shooting
Athletics	Genealogy	Robotics
Automotive Maintenance	Geocaching	Rowing
Aviation	Geology	Safety
Backpacking	Golf	Salesmanship
Basketry	Graphic Arts	Scholarship
Bird Study	Health Care Professions	Scouting Heritage
Bugling	Hiking	Scuba Diving
Camping	Home Repairs	Sculpture
Canoeing	Horsemanship	Search & Rescue
Chemistry	Insect Study	Shotgun Shooting
Chess	Inventing	Signs, Signals, Codes
Citizenship in the Community	Journalism	Skating
Citizenship in the Nation	Kayaking	Small-Boat Sailing
Citizenship in Society	Landscape Architecture	Snow Sports
Citizenship in the World	Law	Soil & Water Conservation
Climbing	Leatherwork	Space Exploration
Coin Collecting	Lifesaving	Sports
Collections	Mammal Study	Stamp Collecting
Communication	Metalwork	Surveying
Composite Materials	Mining in Society	Sustainability
Cooking	Model Design and Building	Swimming
Crime Prevention	Motorboating	Textile
Cycling	Moviemaking	Theater
Dentistry	Multisport	Traffic Safety
Digital Technology	Music	Truck Transportation
Disabilities Awareness	Nature	Veterinary Medicine
Dog Care	Nuclear Science	Water Sports
Drafting	Oceanography	Weather
Electricity	Orienteering	Welding
Electronics	Painting	Whitewater
Emergency Preparedness	Personal Fitness	Wilderness Survival
Energy	Personal Management	Wood Carving
Engineering	Pets	Woodwork
Entrepreneurship	Photography	
Environmental Science	Pioneering	

SCOUTING AMERICA

To place an order,
call **800-323-0736** or go to
scoutshop.org



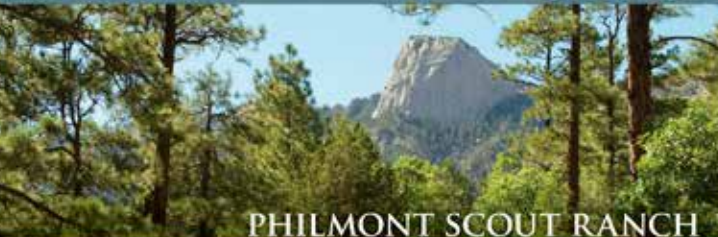
EAGLE SCOUT



THE SUMMIT



SEA BASE



PHILMONT SCOUT RANCH



NORTHERN TIER

Discovery is at the heart of Scouting. We believe every adventure helps us uncover a little more about ourselves. Scouting builds the foundations for courage, resilience, and character, preparing youth for a lifetime of leadership. The path is yours to forge. Who knows what you'll discover?



ON THE ROAD TO HIGH ADVENTURE

SKU 650716



35895 2026 Printing

