

CANDY DISPENSER

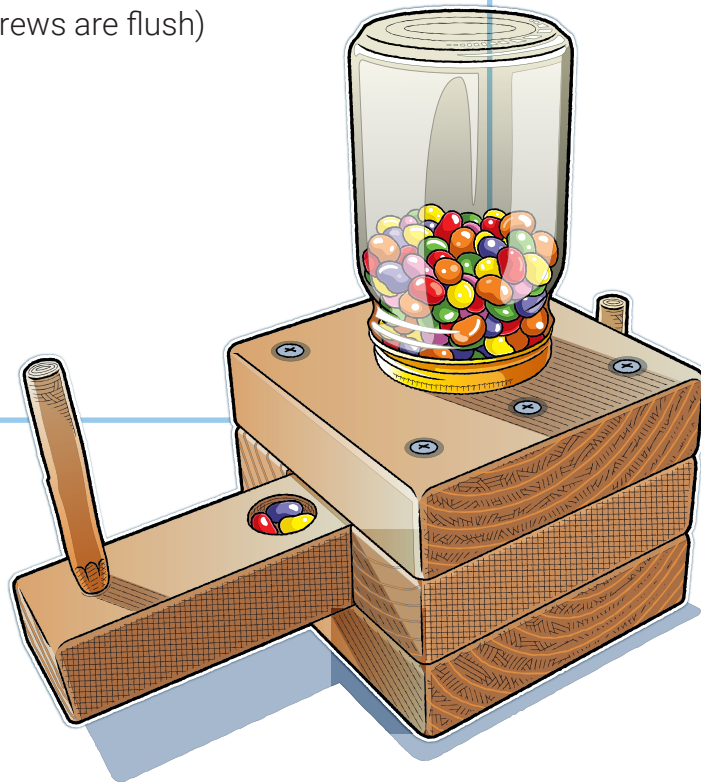
You can make this dispenser for jelly beans, gumballs, or any other hard candy that will fit in it.

Materials and Tools

- ▶ One 2-by-6-inch board, 24 inches long (The actual size of a 2-by-6-inch board is 1½ by 5½ inches.)

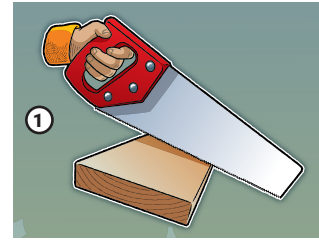
Cut the board as follows:

- Two 1½-by-5½-by-5½-inch boards (top and base)
- Two 1½-by-1¾-by-5½-inch boards (sides)
- 1-by-1⅞-by-11-inch board (slide)
- ▶ 1 dowel or peg about ¼ inch in diameter, 4 inches long
- ▶ 1 dowel or peg about ¼ inch in diameter, 2 inches long
- ▶ A clean quart or pint canning jar with its metal ring
- ▶ Crosscut saw for sawing across the grain
- ▶ Ripsaw for sawing with the grain
- ▶ 12 wood screws, 2½ inches long
- ▶ 4 flathead brads for nailing jar ring to top of dispenser
- ▶ Drill (**Only adults may use a power drill**)
- ▶ Drill bit, sized for pre-drilling 2½-inch holes
- ▶ Small drill bit for pre-drilling brad holes in jar ring
- ▶ Countersink bit (so driven screws are flush)
- ▶ ⅞-inch spade bit
- ▶ Screwdriver
- ▶ Tape measure
- ▶ Pencil
- ▶ Pocketknife
- ▶ Sandpaper
- ▶ Wood glue
- ▶ Jelly beans or gumballs

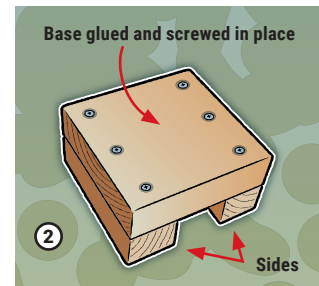


Instructions

1. Cut all the boards to size and sand smooth.

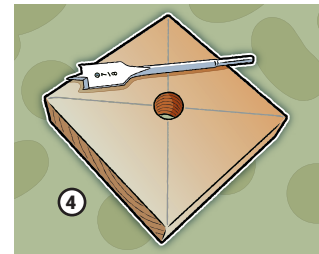


2. Glue and screw the base onto the sides.

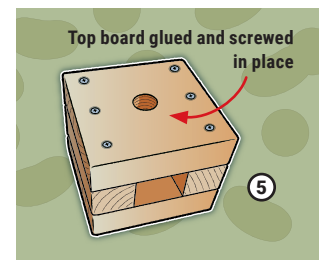


3. Pencil an X from corner to corner on the top board.

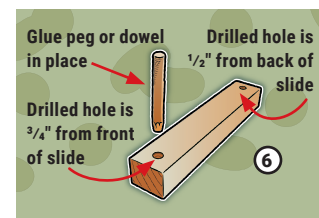
4. Have an adult drill a $\frac{7}{8}$ -inch hole through the center of the top board.



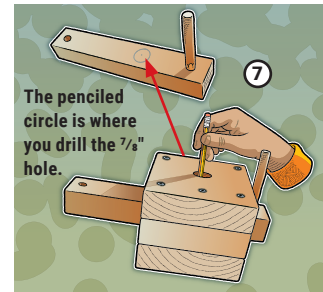
5. Glue and screw the top board onto the sides and base. Sand the slide until it moves smoothly in the square hole in the center of the dispenser.



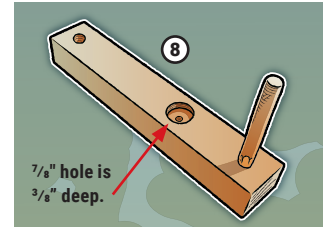
6. Have an adult drill a hole $\frac{3}{4}$ inch from the front of the slide. This is for the 4-inch peg or dowel. Have an adult drill a hole $\frac{1}{2}$ inch from the back of the slide. This is for the 2-inch peg or dowel. Glue the 4-inch peg or dowel in the front hole on the slide.



7. Push the slide into place until it stops at the 4-inch peg. Draw a circle through the $\frac{7}{8}$ -inch hole on the top board onto the slide.

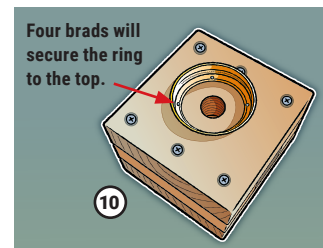


8. Have an adult drill a $\frac{7}{8}$ -inch hole $\frac{3}{8}$ inch deep into the slide as shown.

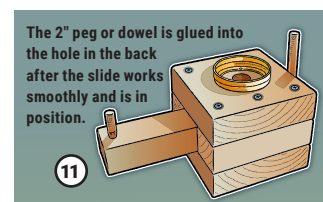


9. Bevel the $\frac{7}{8}$ -inch slide hole with the pocketknife and sand smooth.

10. Have an adult drill and nail the jar ring onto the top board.



11. Push the slide into place. When the slide is pushed in all the way, the hole in the top and the hole in the slide should line up. Glue the 2-inch peg or dowel onto the back of the slide.



12. Fill the jar with candy, screw it onto the ring, and your dispenser is complete.

