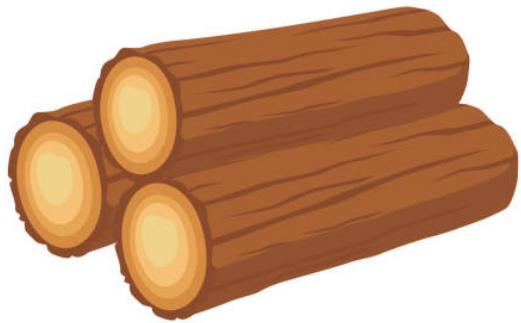


# CONSERVATION CARD DECK



wood



hydroelectric

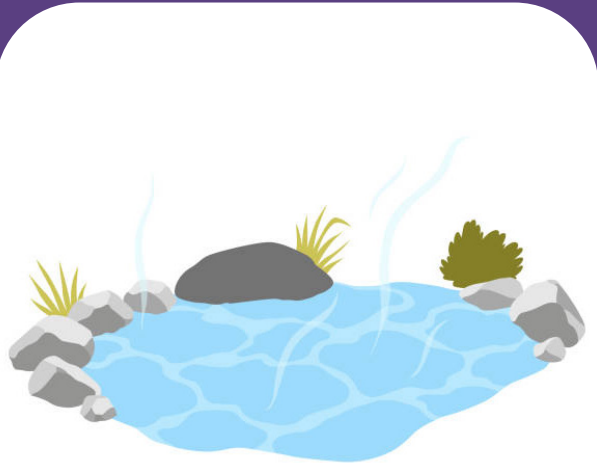


solar



wind

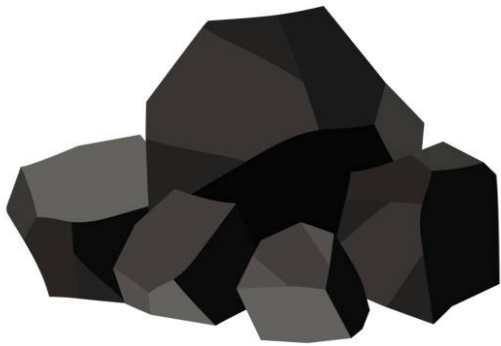
# CONSERVATION CARD DECK



geothermal



trash



coal

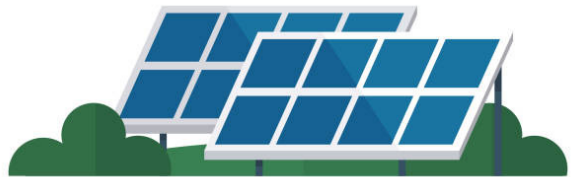


natural gas

# CONSERVATION CARD DECK



oil



solar



biomass



petroleum

# CONSERVATION CARD DECK



biomass



tidal

## Instructions:

1. Print and cut out cards.
2. Mix cards up and lay them face up in front of players.
3. Players are to separate them into two piles: renewable and non-renewable.