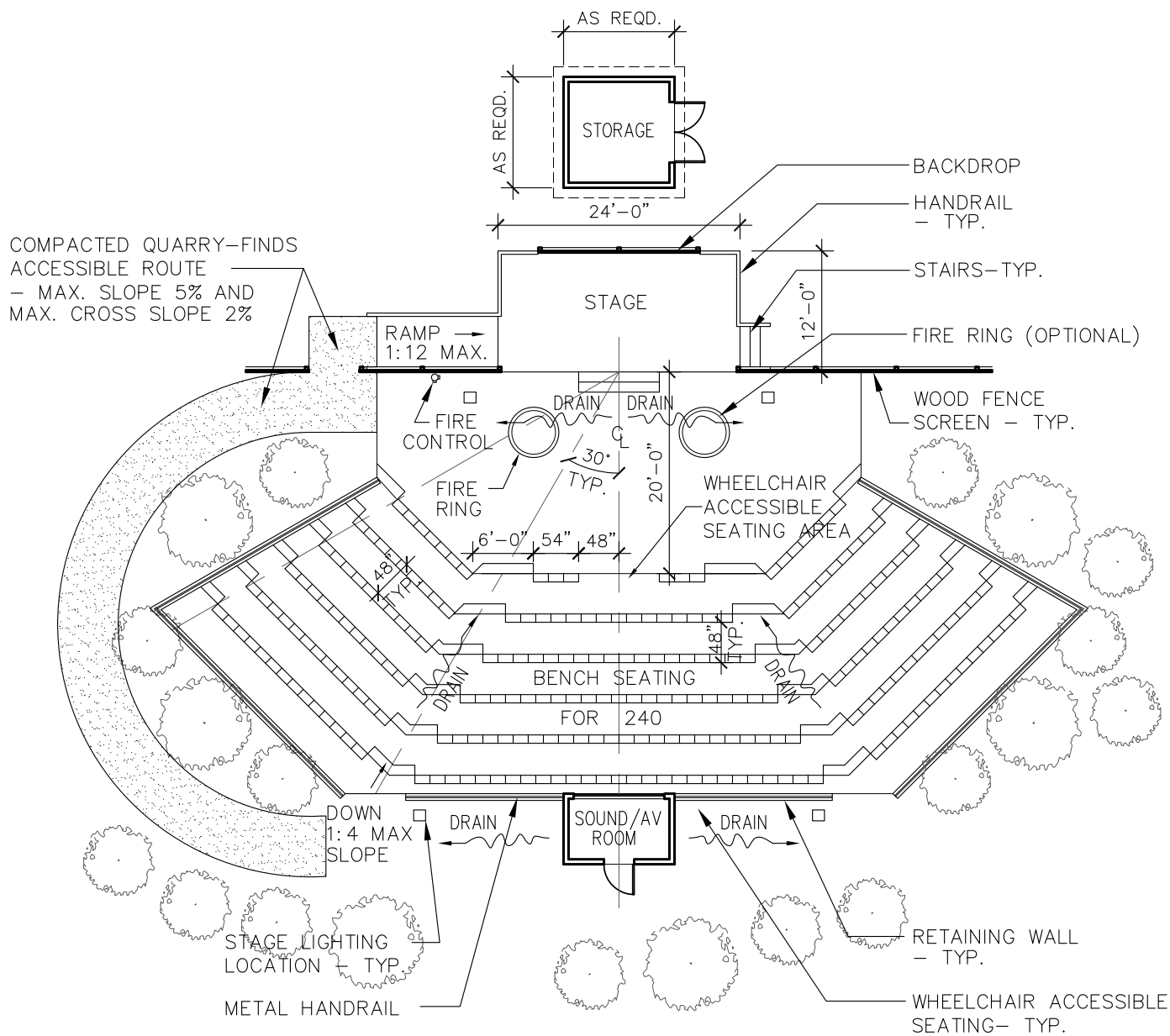




# THE AMPHITHEATER:

THIS FORM OF GATHERING PLACE PROVIDES SEATING CAPACITY AND STAGE AREA FOR SHOWS AND ENTERTAINMENT FOR GUESTS AND CAMPERS. IT SHOULD BE LOCATED ON A GRADUAL SLOPE WITH AN ATTRACTIVE STAGE BACKGROUND. PREFERABLY, IT SHOULD BE WITHIN EASY WALKING DISTANCE OF THE PARKING LOT, AND ALTHOUGH NOT COMPLETELY ISOLATED FROM CAMPING STRUCTURES AND PROGRAM AREAS, SUCH FACILITIES SHOULD NOT BE VISIBLE BEHIND THE STAGE. AN ADEQUATE DEGREE OF BUFFER AREA FROM CONFLICTING ACTIVITIES CAN BE ACHIEVED BY PROVIDING A MINIMUM OF ONE ACRE FOR INSTALLATION OF THE AMPHITHEATER.



## SITE PLAN

SCALE: 1/16" = 1'-0"



# AMPHITHEATER

APRIL 2008

DESIGN  
301  
GUIDELINE

# RECOMMENDATIONS:

## **STAGE RECOMMENDATIONS:**

1. 24'-0" x 12'-0"
2. APPROX. 16" ABOVE GRADE
3. HANDRAIL ALONG REAR AND SIDES OF STAGE
4. OPTIONAL STAGE MATERIALS: CONCRETE  
SONATUBE WOOD DECKING QUARRY FINDS  
COMPOSITE MATERIAL

## **SEATING RECOMMENDATIONS:**

1. LOCATE FIRST ROW 20' FROM STAGE
2. 4' BETWEEN ROWS
3. 16" FROM GRADE TO TOP OF BENCH
4. THREE SECTIONS WITH TWO AISLES
5. 5' TO 6' AISLE WIDTH
6. EACH BENCH SECTION CONSTRUCTED IN MULTIPLES OF 18" LENGTHS
7. OPTIONAL BENCH MATERIALS: CONCRETE  
WOOD STONE COMPOSITE MATERIAL

## **SOUND RECOMMENDATIONS:**

1. CONSTRUCT SOUND/AV ROOM WITH SUBSTANTIAL MATERIAL SUCH AS MASONRY OR STONE. SUBSTANTIAL WOOD FRAME CONSTRUCTION ONLY TO COMPLY WITH APPLICABLE BUILDING CODES.
2. SOUND ENHANCING SYSTEM
3. INSTALL CONDUIT BETWEEN SOUND/AV ROOM AND STAGE

## **LIGHTING/ELECTRICAL RECOMMENDATIONS:**

1. PROVIDE LOW-LEVEL AISLE LIGHTING
2. PROVIDE OVERHEAD GENERAL LIGHTING (WITHIN TREES IF POSSIBLE)
3. PROVIDE DIRECTIONAL STAGE LIGHTING
4. ALL ELECTRICAL CONNECTIONS & OUTLETS TO BE ON GFI BREAKERS FOR EXTERIOR USE.
5. OPTIONAL FOOT LIGHTS

## **FIRE RING RECOMMENDATIONS:**

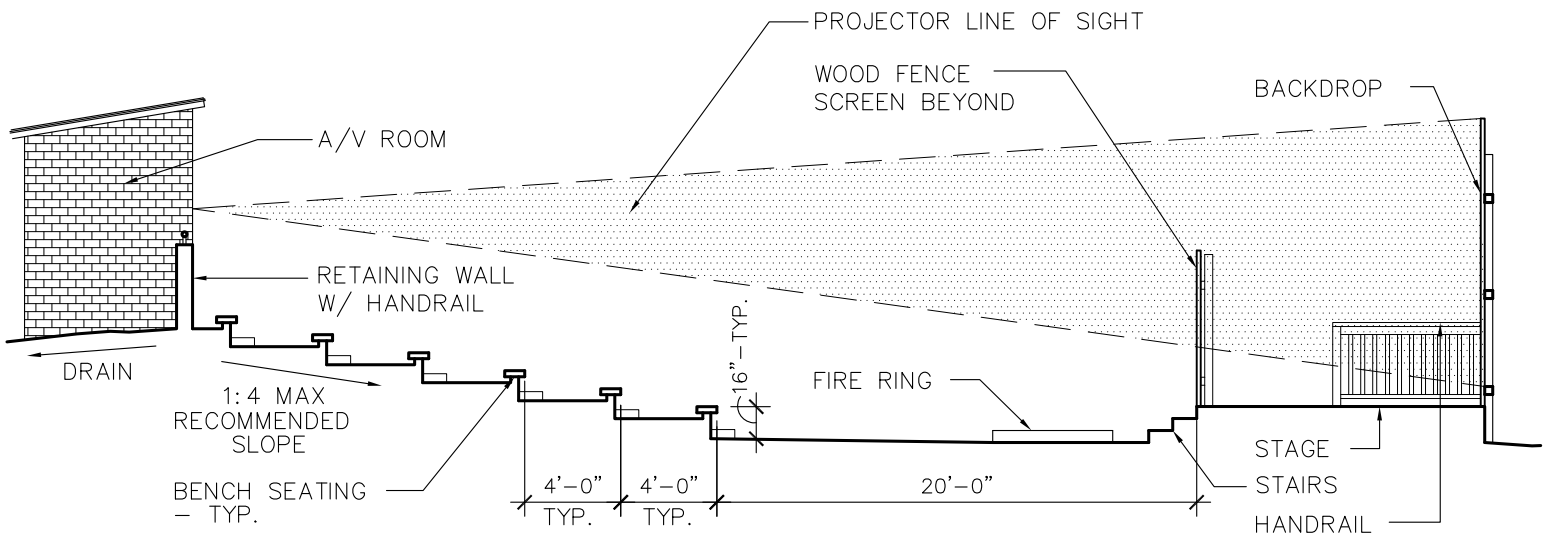
1. METAL OR OTHER NON-COMBUSTABLE MATERIAL
2. MINIMUM OF ONE FIRE RING
3. REMOVE ALL TREES WITHIN 20'-0" OF FIRE RING

## **DRAINAGE RECOMMENDATIONS:**

1. SURFACE DRAINAGE PREFERRED
2. CATCH BASINS, AREA DRAINS, AND FRENCH DRAINS ALTERNATE AS NEEDED.

## **ANCILLARY FACILITIES:**

1. ACCESSIBLE RESTROOM FACILITIES, MALE AND FEMALE, TO BE PROVIDED IF THERE IS NOT A NEARBY BUILDING WITH ADEQUATE RESTROOMS.



## SECTION (SEATING PROFILE)

SCALE: 1/8" = 1'-0"

## SEATING TABULATION:

THE FIRST 6 ROWS AS SHOWN.....240 SEATS

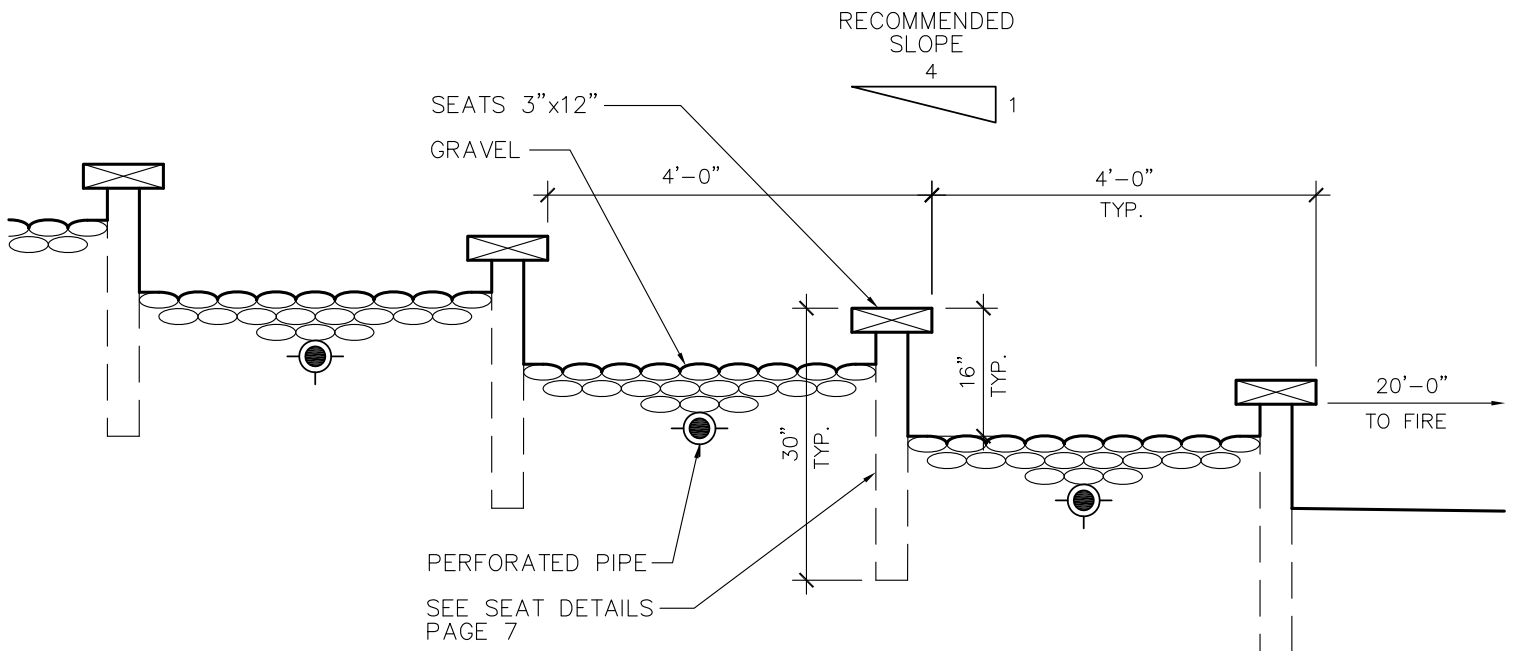
EACH ROW THEREAFTER FOR ADDITIONAL SEATING:

7 TOTAL ROWS.....300 SEATS

8 TOTAL ROWS.....367 SEATS

9 TOTAL ROWS.....440 SEATS

10 TOTAL ROWS.....518 SEATS



## SEATING PROFILE

SCALE: 1/2" = 1'-0"

# LAYOUT INSTRUCTIONS:

---

**NOTE:** INSTRUCTIONS ARE BASED ON A STAGE THAT IS 24'-0" WIDE x 12'-0" DEEP .

## **STEP #1 - PLACING POINT "C" IN CENTER OF STAGE**

REQUIRED TOOLS FOR STEP 1

- TAPE MEASURE
- (1) 3/8 DIA REBAR
- HAMMER
- CHALK LINE STRING

1. ONCE FACE OF STAGE IS LOCATED YOU HAVE POINT "A" AND POINT "B" LOCATED,
2. USING TAPE MEASURE, MEASURE 12'-0" BETWEEN POINT "A" AND POINT "B". ONCE YOU HAVE MEASURED 12'-0", DRIVE A 3/8" REBAR INTO GROUND.
3. IN ORDER TO CHECK TO MAKE SURE THAT POINT "A", POINT "B" AND POINT "C" ARE IN LINE, TAKE A CHALK LINE STRING, TIE IT TO POINT "A" PULL IT TIGHT AND TIE IT TO POINT "B". ALL 3 POINTS SHOULD ALIGN.

**NOTE:** ONCE YOU HAVE POINT "C" PLACED, IT SHOULD BE IN THE CENTER OF POINT "A" AND POINT "B" OF THE STAGE.

## **STEP #2 - LOCATING 30° ANGLE FOR THE SEATING AREA**

REQUIRED TOOLS FOR STEP #2:

- TAPE MEASURE
- (2) 3/8 DIA REBAR
- HAMMER

1. USING TAPE MEASURE, MEASURE FROM POINT "B" 6'-11 1/8". DRIVE REBAR PARTIALLY INTO GROUND FOR REFERENCE. THEN MEASURE FROM POINT "C" 13'-10 1/4" TOWARDS PARTIAL REBAR. WHERE THESE TWO POINTS INTERSECT IS WHERE POINT "D" IS LOCATED.

**NOTE:** REFERENCE DRAWING FOR DIMENSION AND POINT VERIFICATION.

**NOTE:** USE SAME INSTRUCTIONS FOR ANGLE FROM POINT "A"

## **STEP #3 - LOCATING BOUNDARY LINE FOR SEATING AREA**

REQUIRED TOOLS FOR STEP #3:

- TAPE MEASURE
- (2) 3/8 DIA REBAR
- HAMMER
- CHALK LINE STRING

1. USING A TAPE MEASURE, PLACE END OF TAPE AT POINT "C". WALK OUT TO 43'-4". MAKE SURE TAPE MEASURE IS IN LINE WITH POINT "D" AND PLACE 3/8" REBAR INTO GROUND.
2. IN ORDER TO CHECK TO MAKE SURE THAT POINT "C", POINT "D" AND POINT "E" ARE IN LINE, TAKE A CHALK LINE STRING, TIE IT TO POINT "C", PULL THE LINE TIGHT AND TIE IT TO POINT "E". ALL 3 POINTS SHOULD ALIGN.

**NOTE:** USE SAME INSTRUCTIONS FOR OTHER SIDE.

## **STEP #4 - SEATING ROWS**

REQUIRED TOOLS FOR STEP #4:

- TAPE MEASURE
- LANDSCAPE SPRAY PAINT
- RUST-OLEUM MARKING WAND #2393000 HOME DEPOT SKU #194-875

1. USING A TAPE MEASURE, PLACE END OF TAPE AT POINT "C". WALK OUT 20'-0". AT THE 20' MARK PAINT THE FIRST ROW FROM 30° ANGLE REFERENCE LINE TO 30° ANGLE REFERENCE LINE.
2. REPEAT STEP 1 FOR ALL ROWS NOTED ON PLANS. REFER TO DIMENSIONS ON PLAN FOR EACH ROW.

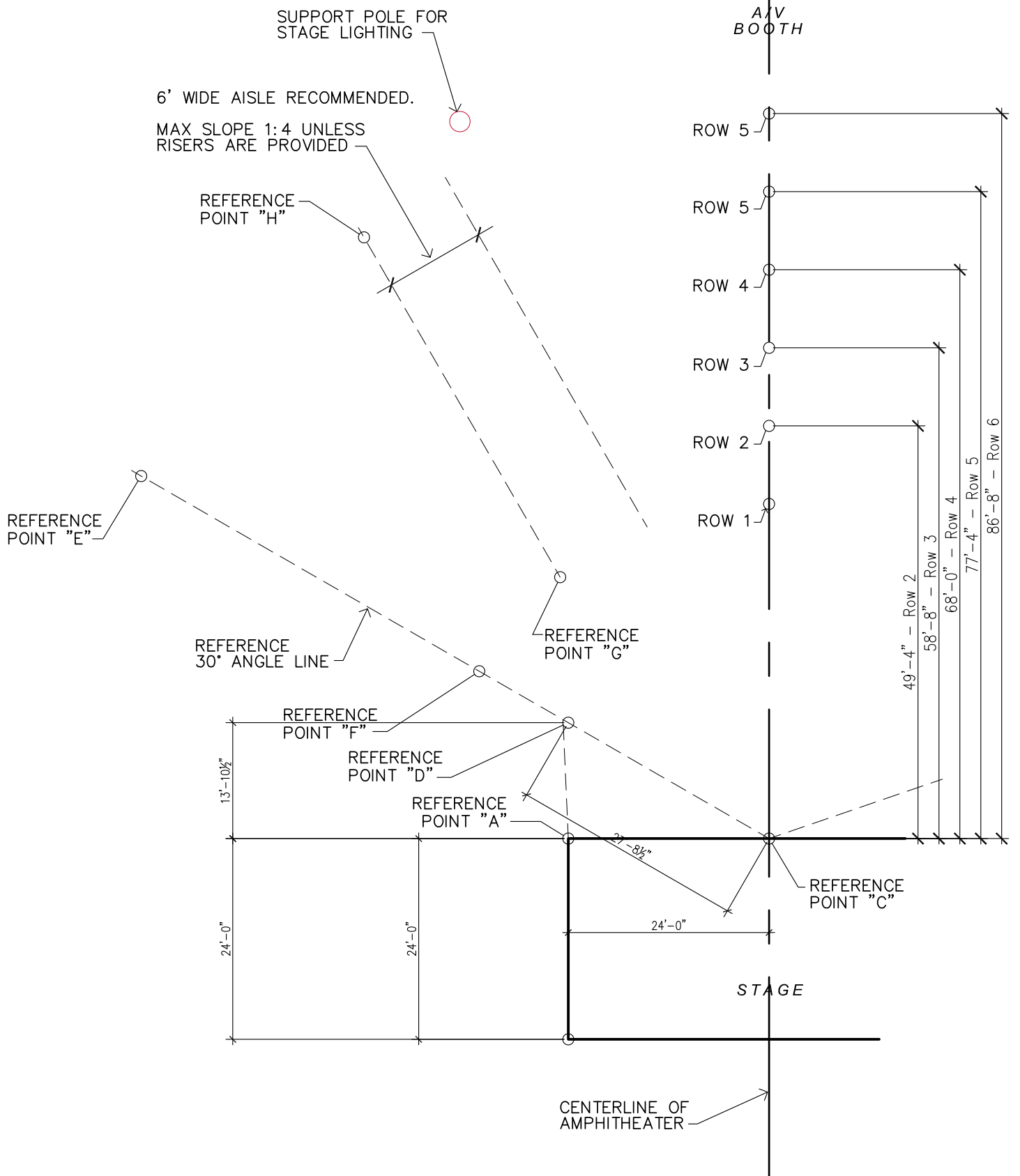
**NOTE:** WHEN YOU ARE WALKING THE ROWS BE SURE TO KEEP THE TAPE MEASURE TIGHT.

**NOTE:** BY USING POINT "C" AS A REFERENCE POINT. THE ROWS WILL END UP AS AN ARC LINE.

(CONTINUED PAGE 6)

# LAYOUT PLAN:

SCALE: 1/16" = 1'-0"



# LAYOUT INSTRUCTIONS:

(CONTINUED FROM PAGE 4)

**STEP #5 - AISLES**

REQUIRED TOOLS FOR STEP #5:

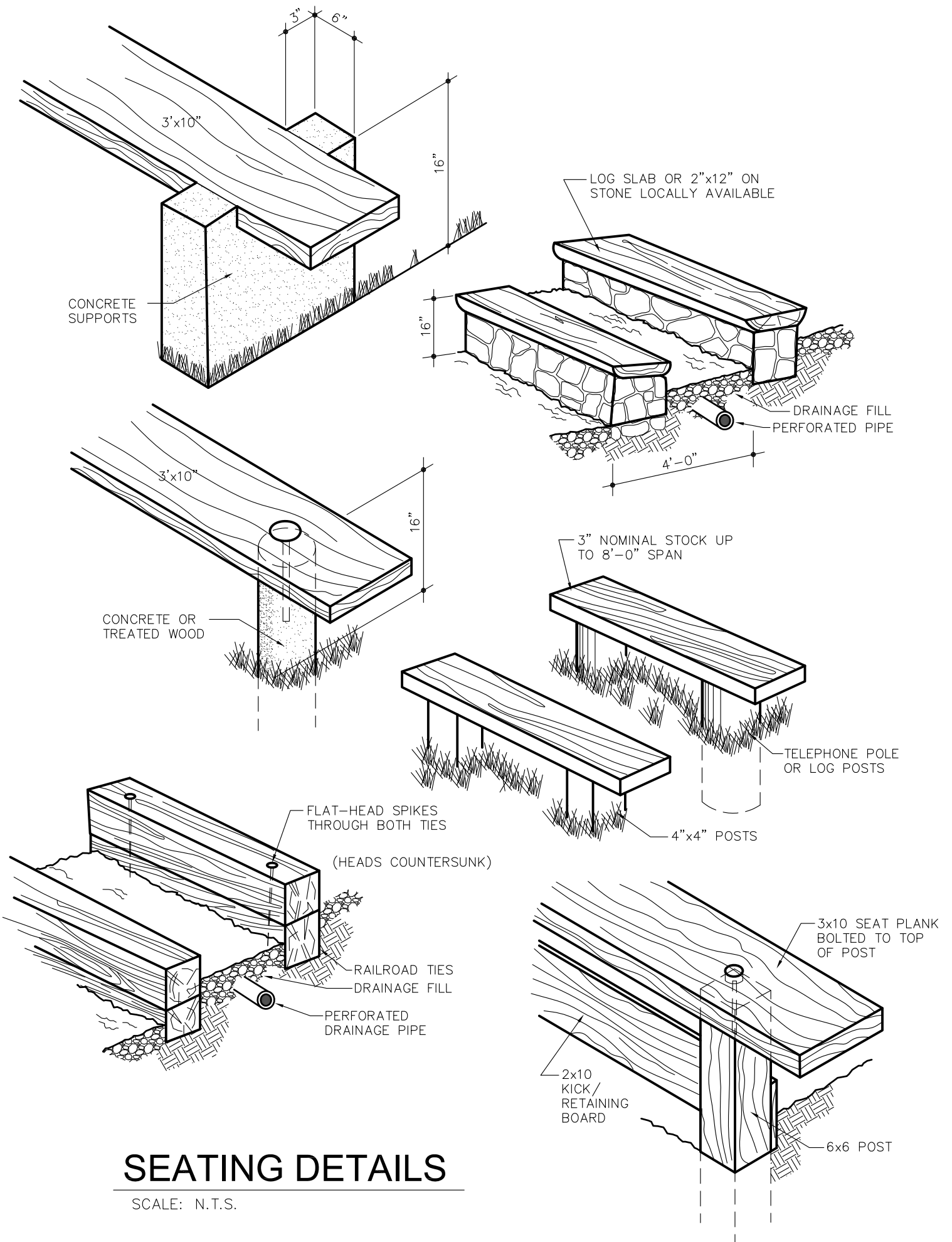
- TAPE MEASURE
- (4) 3/8 DIA REBAR
- HAMMER
- LANDSCAPE SPRAY PAINT
- CHALK LINE STRING
- RUST-OLEUM MARKING WAND #2393000 HOME DEPOT SKU #194-875

1. PLACE REBAR AT POINT "F", WHERE THE "PAINT LINE" AND "REFERENCE 30° ANGLE LINE" INTERSECT.
2. USING A TAPE MEASURE, PLACE END OF TAPE AT POINT "F". WALK OUT 7'-5". BE SURE TO KEEP TAPE MEASURE TIGHT. WHEN TAPE MEASURE LINES UP WITH PAINTED STRIP, THAT IS LOCATION OF POINT "G". HAMMER 3/8" REBAR IN LOCATION.
3. USING A TAPE MEASURE, PLACE END OF TAPE AT POINT "E". WALK OUT 19'-6 1/4". BE SURE TO KEEP TAPE MEASURE TIGHT. WHEN TAPE MEASURE LINES UP WITH PAINTED STRIP, THAT IS LOCATION OF POINT "H". HAMMER 3/8" REBAR IN LOCATION.
4. IN ORDER TO MAKE A STRAIGHT LINE, TAKE A CHALK LINE STRING, TIE IT TO POINT "G" PULL THE LINE TIGHT AND TIE IT TO POINT "H". USING THE LINE AS A GUIDE SPRAY PAINT A LINE FROM POINT "G" TO POINT "H".

**NOTE:** USE SAME INSTRUCTIONS FOR OTHER SIDE

# REQUIRED SUPPLIES:

<u>QTY</u>	<u>PRODUCT</u>	<u>COMMENTS</u>
1	30' STEEL TAPE MEASURE	
1	100' STEEL TAPE MEASURE 3/8"	
12	STEEL REINFORCING BAR	18" - 24" IN LENGTH
2	NYLON STRING	
1	HAMMER	5 LBS. HAND SLEDGE
4	LANDSCAPE SPRAY CANS	
1	RUST-OLEUM MARKING WAND PRODUCT #2393000 - HOME DEPOT SKU #194-875	ANY COLOR



# SEATING DETAILS

SCALE: N.T.S.