



CAMPSITE FOOD CHEST:

DESIGN REFERENCE FOR A WOOD FOOD CHEST USED FOR TROOP CAMPSITE STORAGE OF DRY GOODS, UTENSILS, ETC.

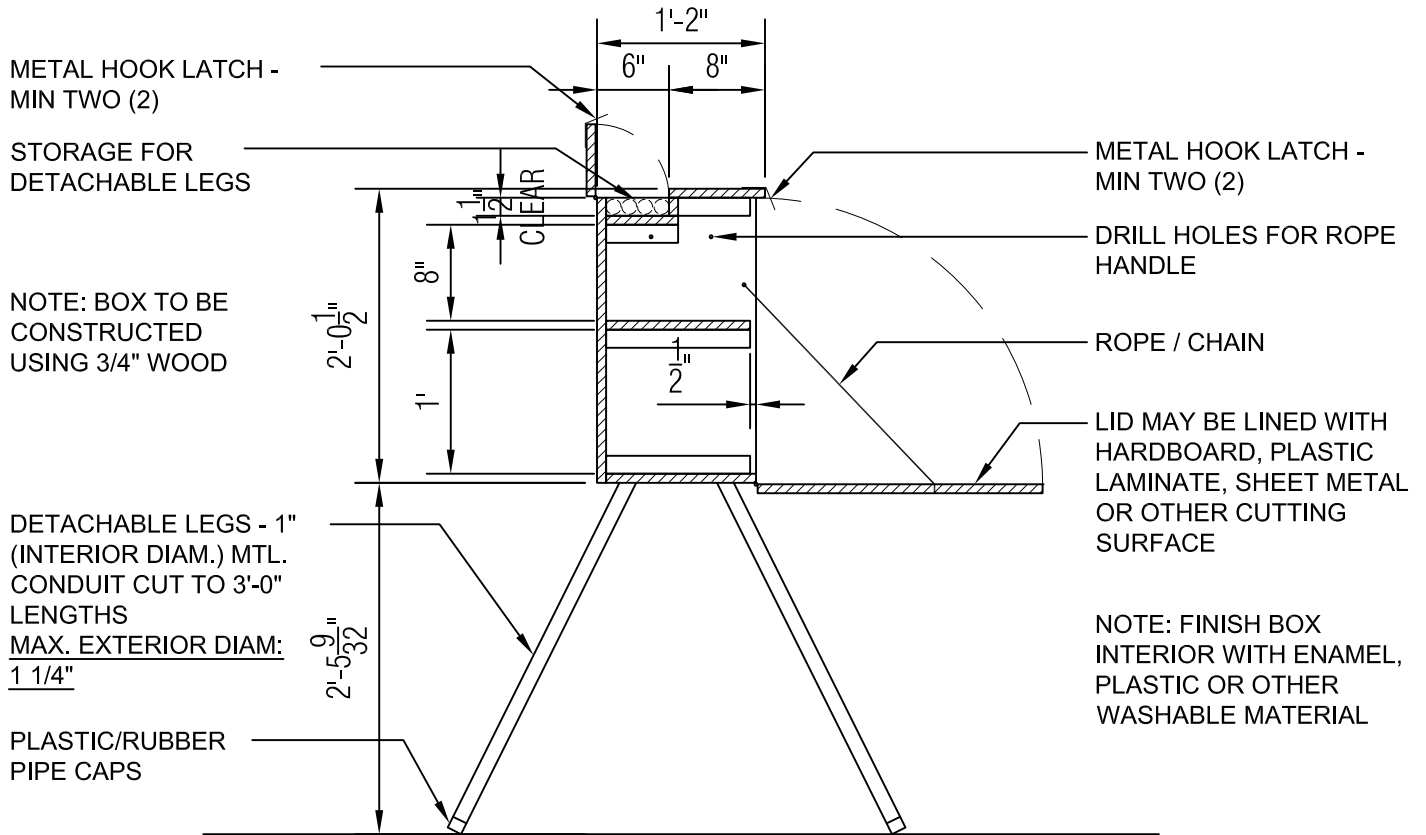


ENGINEERING SERVICE
IRVING TEXAS
972 580 7826

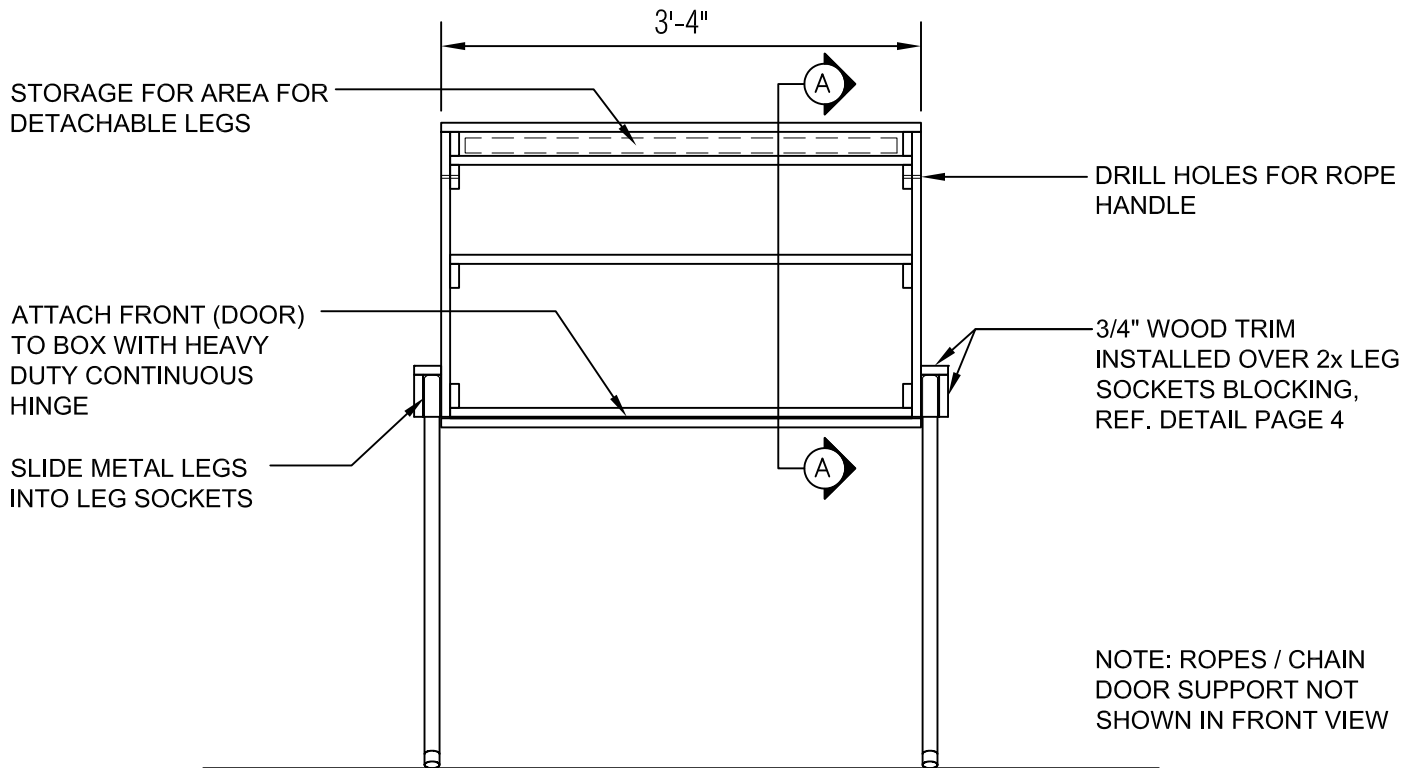
CAMPSITE FOOD CHEST

DECEMBER 2008

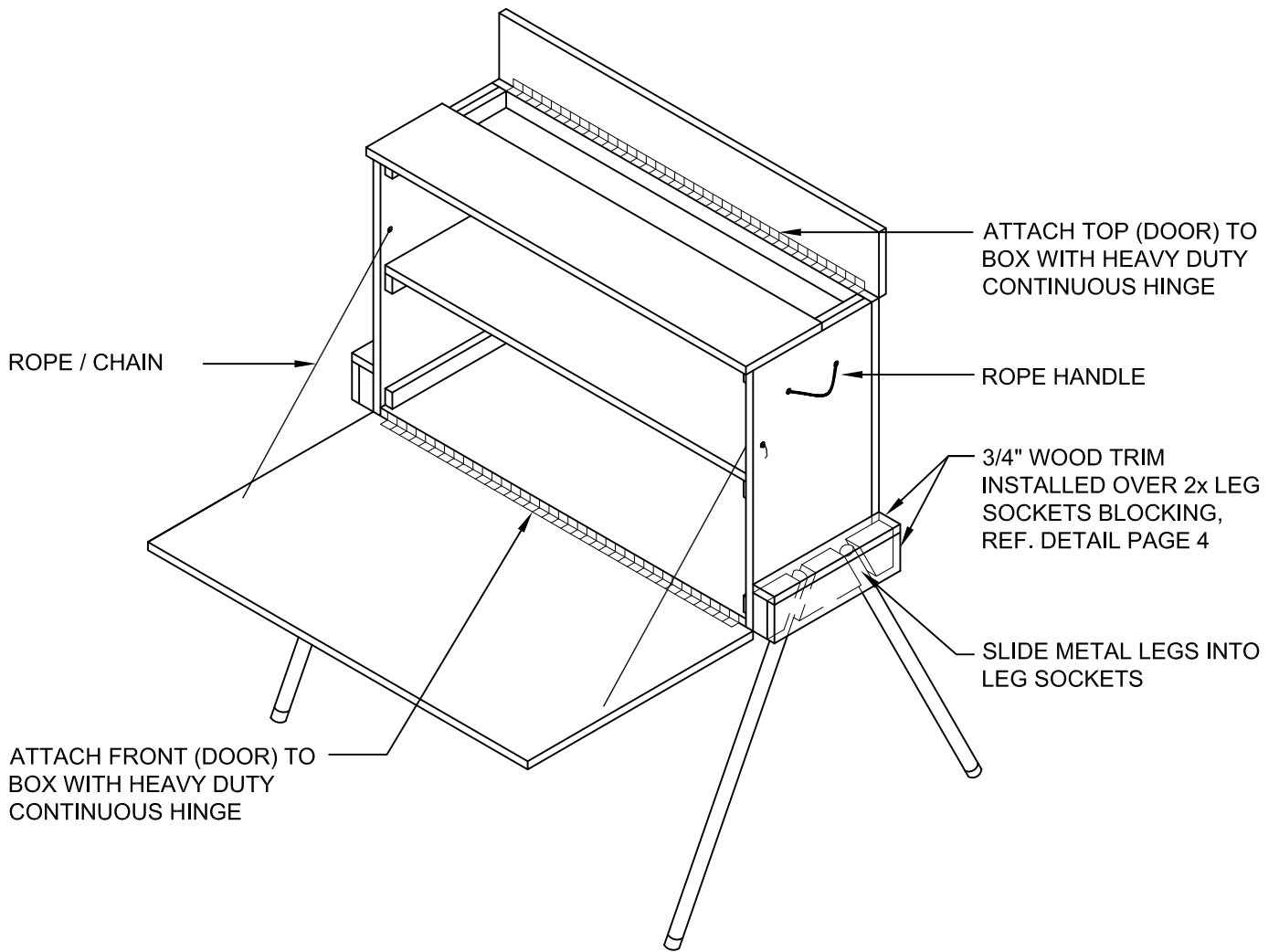
DESIGN
340
GUIDELINE



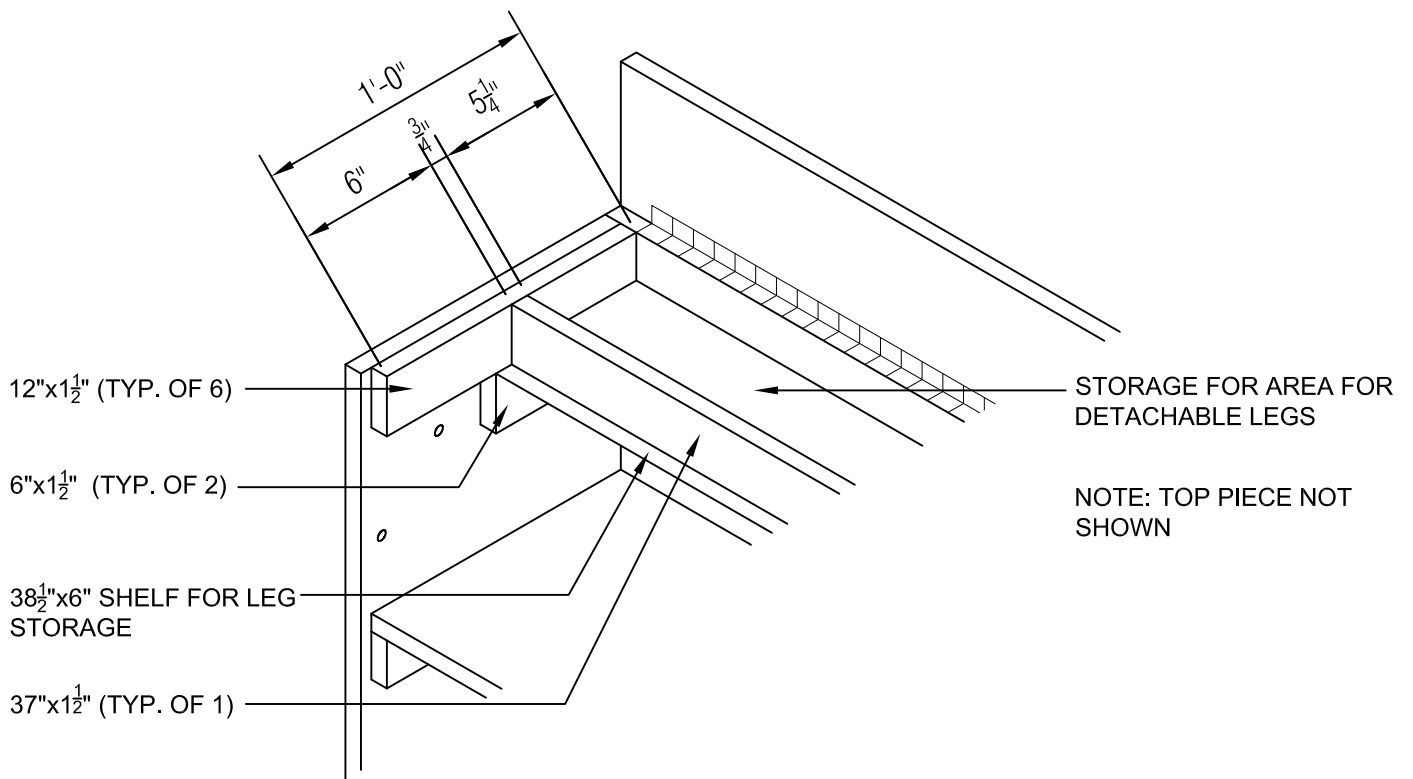
SECTION "A"



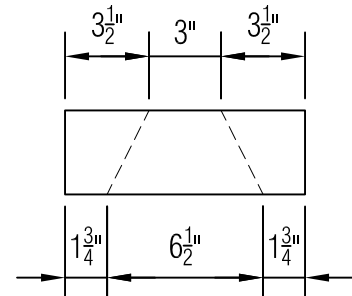
FRONT VIEW



PERSPECTIVE VIEW

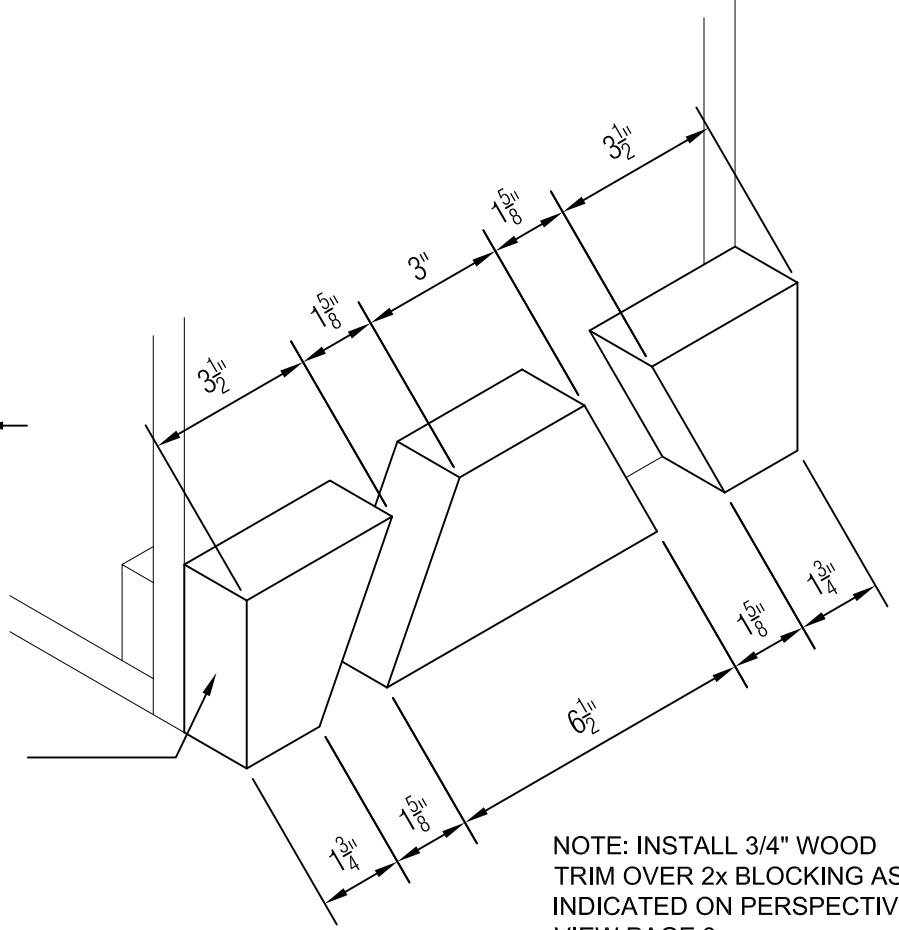


ENLARGED DETAIL



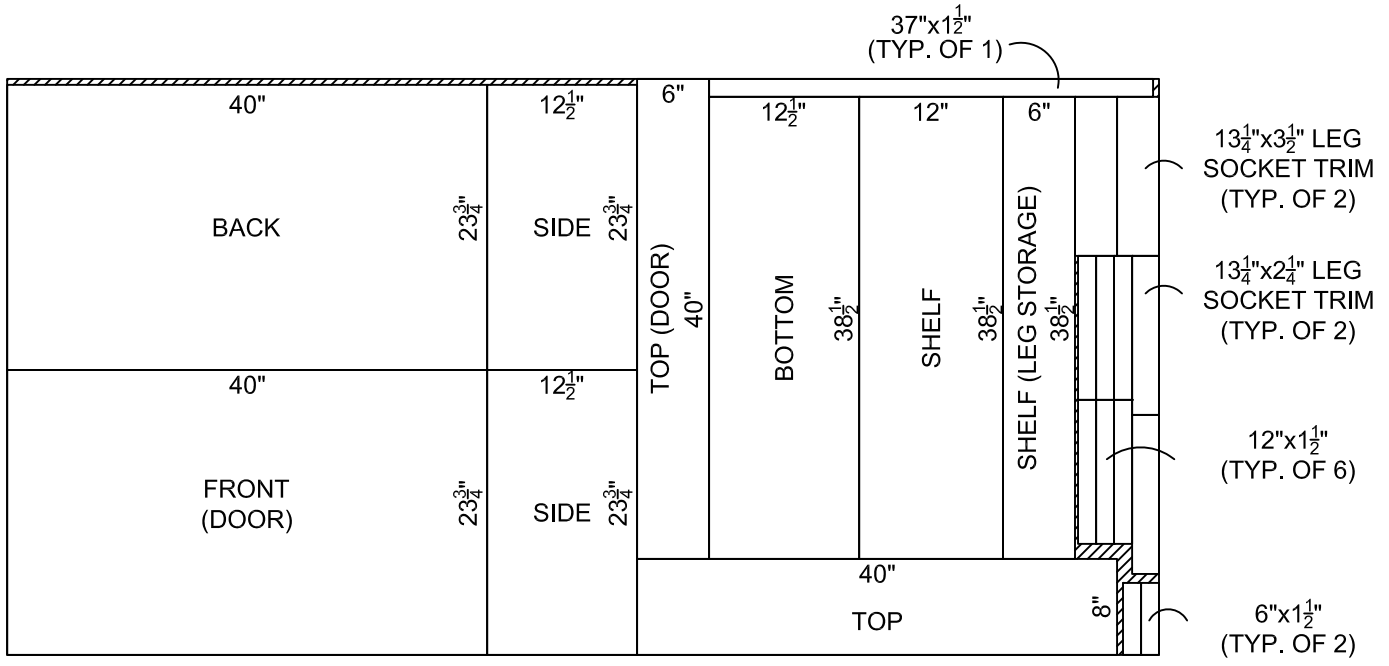
BLOCKING CUT FROM 10"
LONG 2x (TYP. OF 2)

ATTACH BLOCKS WITH
WATERPROOF GLUE AND
SCREW TO BOX FRAME
FROM INSIDE



NOTE: INSTALL 3/4" WOOD
TRIM OVER 2x BLOCKING AS
INDICATED ON PERSPECTIVE
VIEW PAGE 3

LEG SOCKETS DETAIL



NOTE: BOX PIECES TO BE CUT FROM SINGLE
48"x96"x3/4" SHEET OF PLYWOOD. BLOCKING FOR
LEG SOCKETS SHALL BE CUT FROM A 10" LONG 2x
(ONE FOR EACH SIDE), REF. DETAIL ABOVE.

CUTTING PROCEDURE