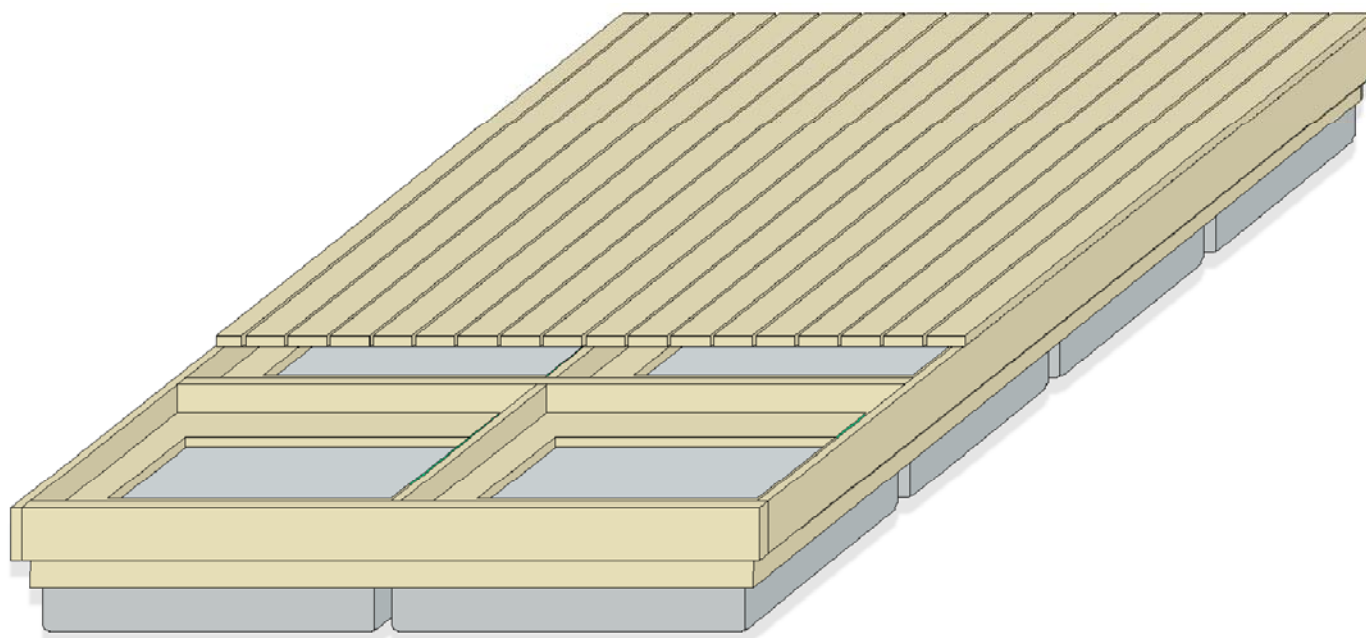




FLOATING DOCK

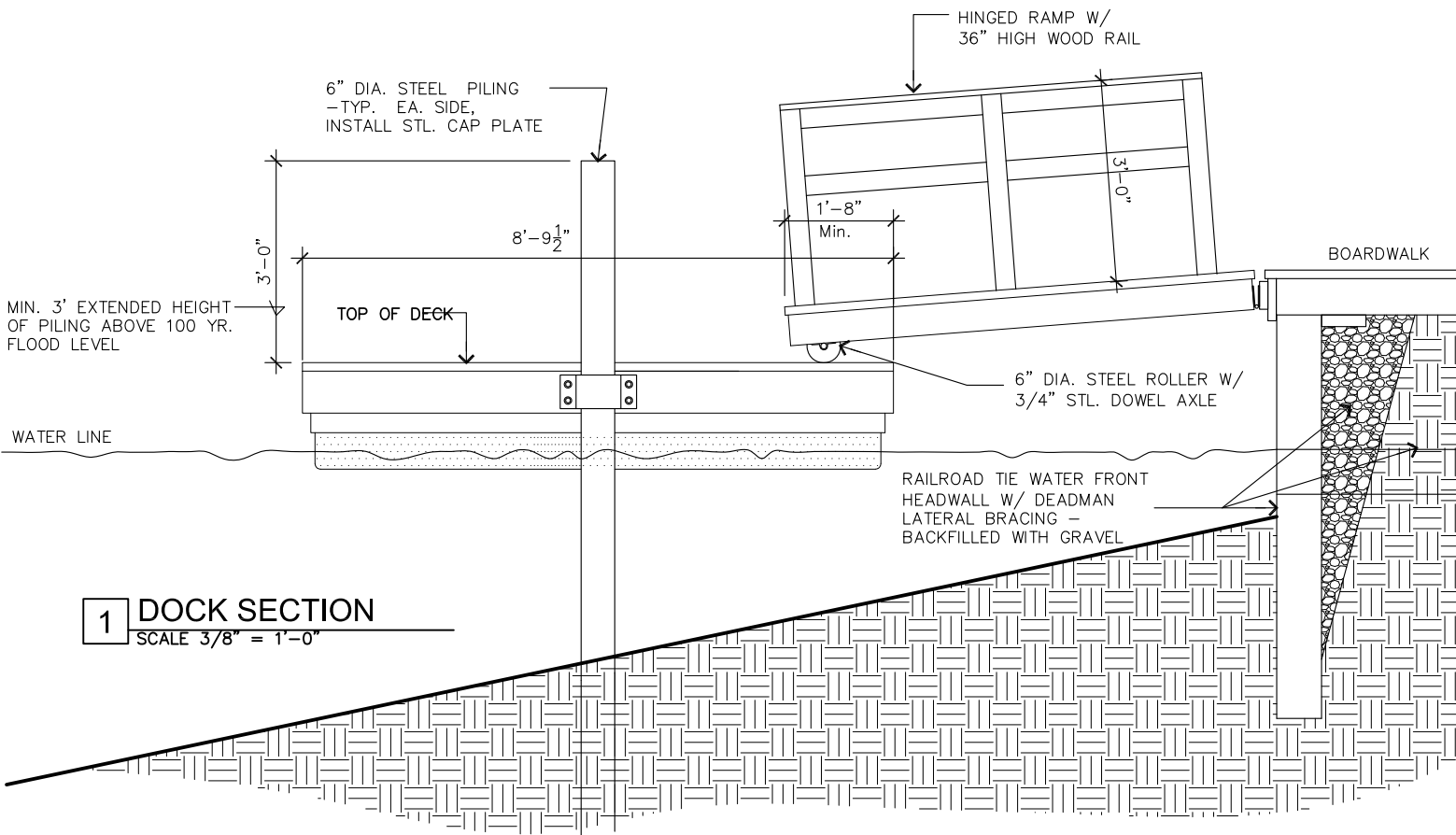
DESIGN REFERENCE FOR A WOOD DOCK ON ENCAPSULATED FLOATS.



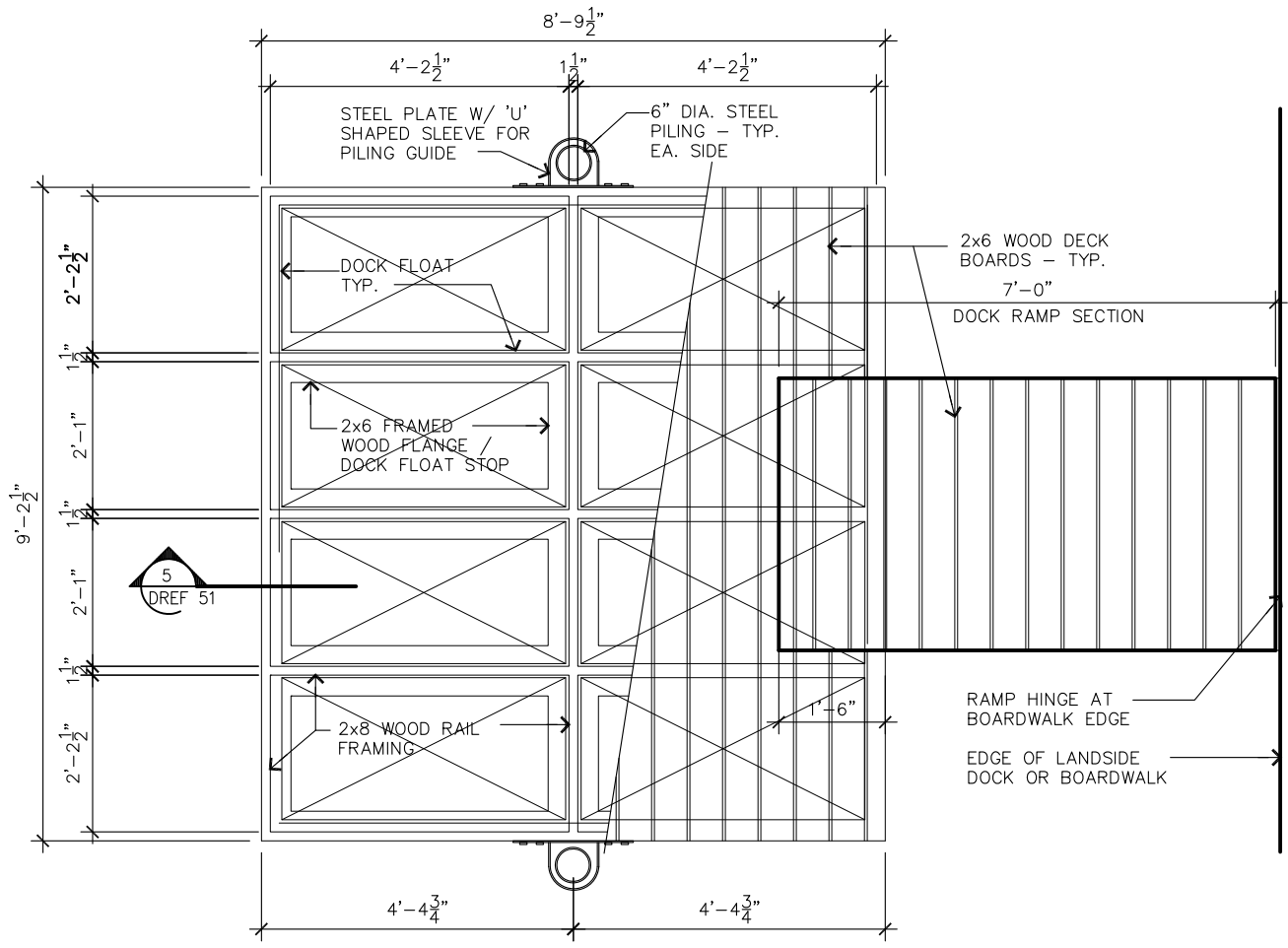
FLOATING DOCK

APRIL 2008

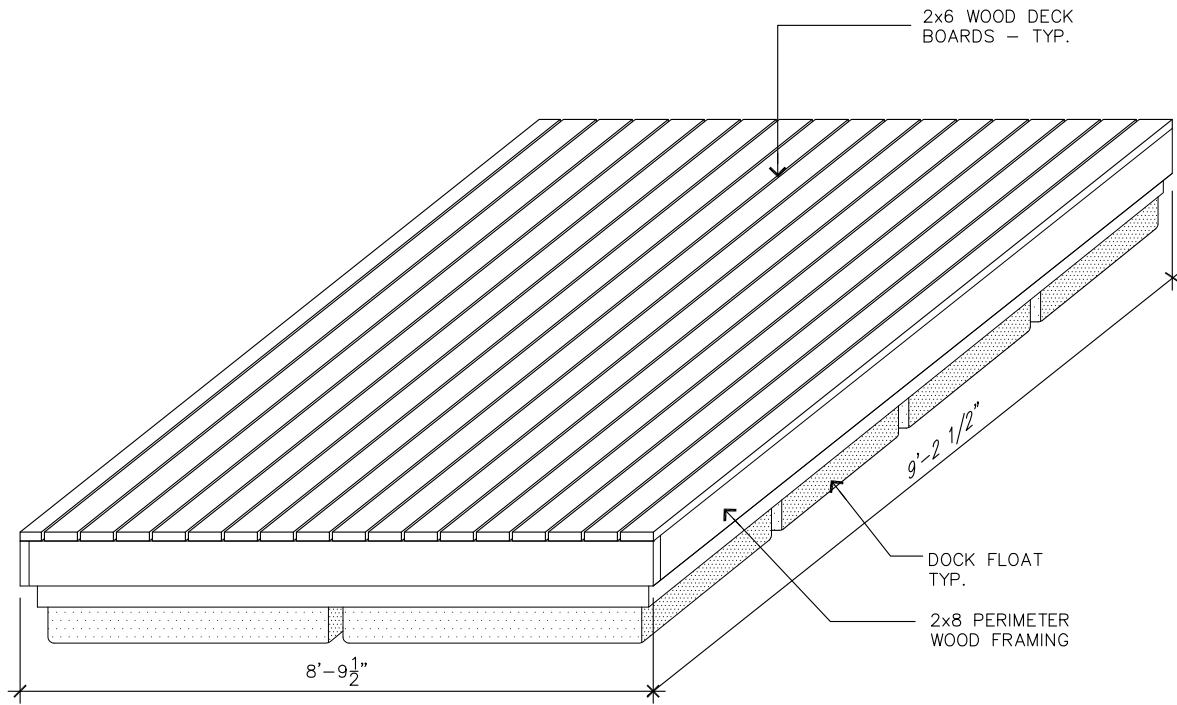
DESIGN
342
GUIDELINE



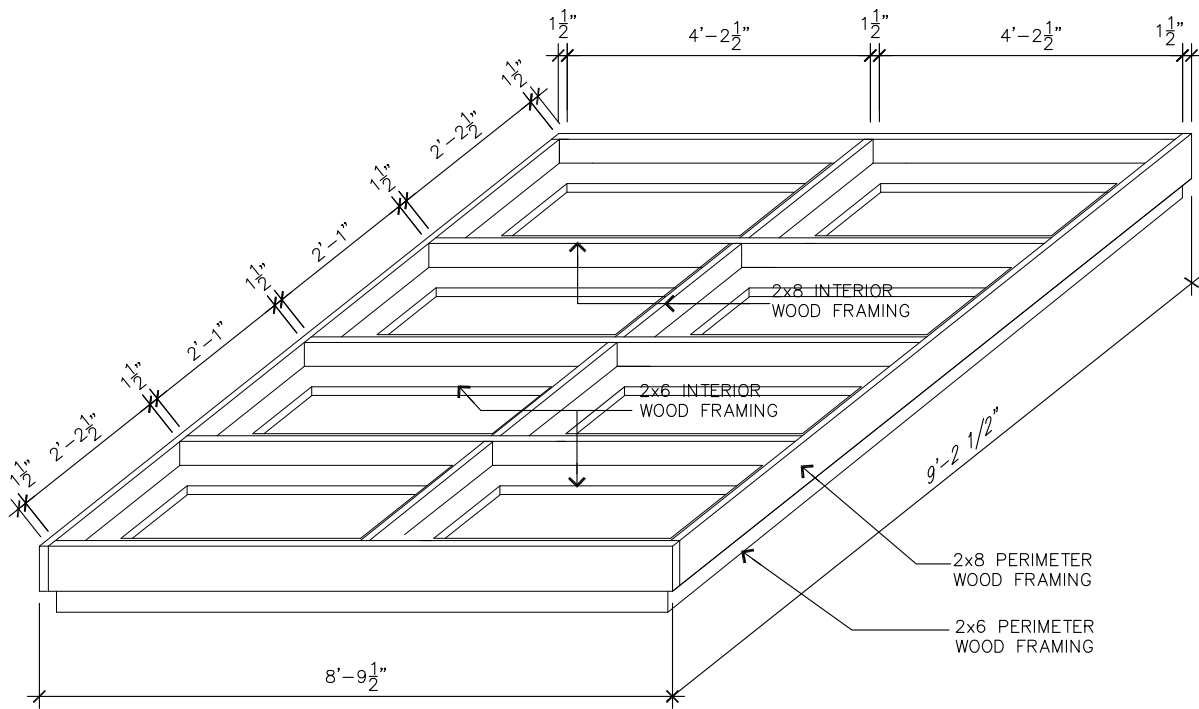
1 DOCK SECTION
SCALE 3/8" = 1'-0"



2 DOCK PLAN
SCALE 3/8" = 1'-0"



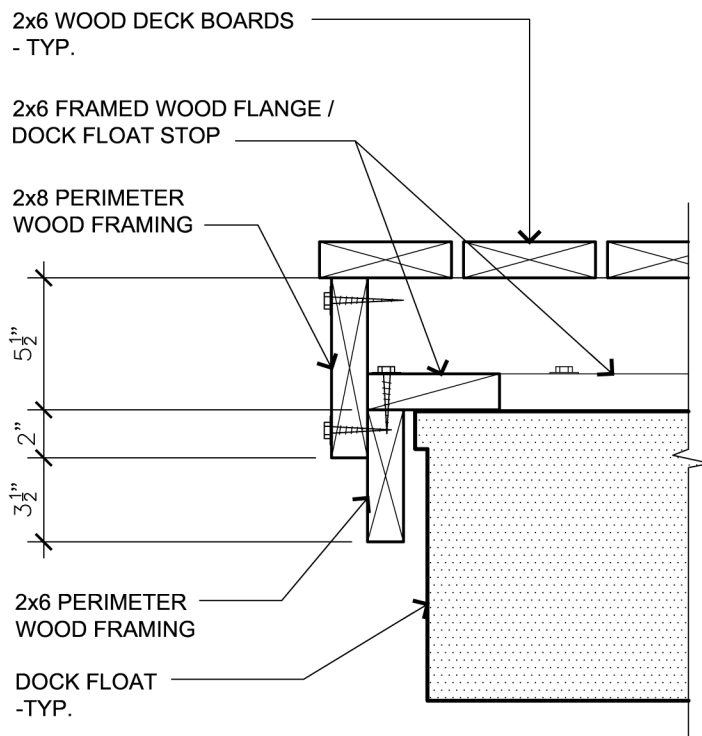
4 DOCK ISOMETRIC VIEW
SCALE 3/8" = 1'-0"



3 DOCK FRAMING ISOMETRIC
SCALE 3/8" = 1'-0"

GENERAL NOTES

1. ALL WOOD COMPONENTS FOR FLOATING DOCK SHALL BE PRESSURE TREATED OR MARINE GRADE S4S, 2x WOOD FRAMING (NOT CREOSOTE).
2. PAINT (2) COATS WITH CLEAR PENETRATING WOOD SEALER AFTER ASSEMBLING.
3. FASTENERS: USE GALV. WOOD SCREWS FOR DECKING AND TOE NAILING AND GALV. LAG BOLTS AND THRU BOLTS FOR ALL OTHER FASTENERS (NO NAILS).
4. DOCK FLOATS: 2' x 4' X 1' DEEP STANDARD DOCK FLOATS - ONE-PIECE, SEAMLESS, MOLDED POLYETHYLENE RESIN ENCASMENTS WITH POLYSTYRENE SOLID FILL. VERSAFLOAT AS MFG. BY PREMIER MATERIALS OR DOCK FLOATS AS MFG. BY DOCK BOXES UNLIMITED, OR APPROVED EQUAL. ALL FLOATS MUST BE UV RAY PROTECTED, IMPACT RESISTANT, WATER TIGHT AND MEET THE STANDARDS OF THE ARMY CORPS OF ENGINEERS.
5. STEEL PIPING AND CLAMPS SHALL BE PRIMED AND PAINTED WITH MARINE GRADE PAINT (MIN. 2 COATS).



5

DOCK DETAIL

SCALE 1 1/2" = 1'-0"