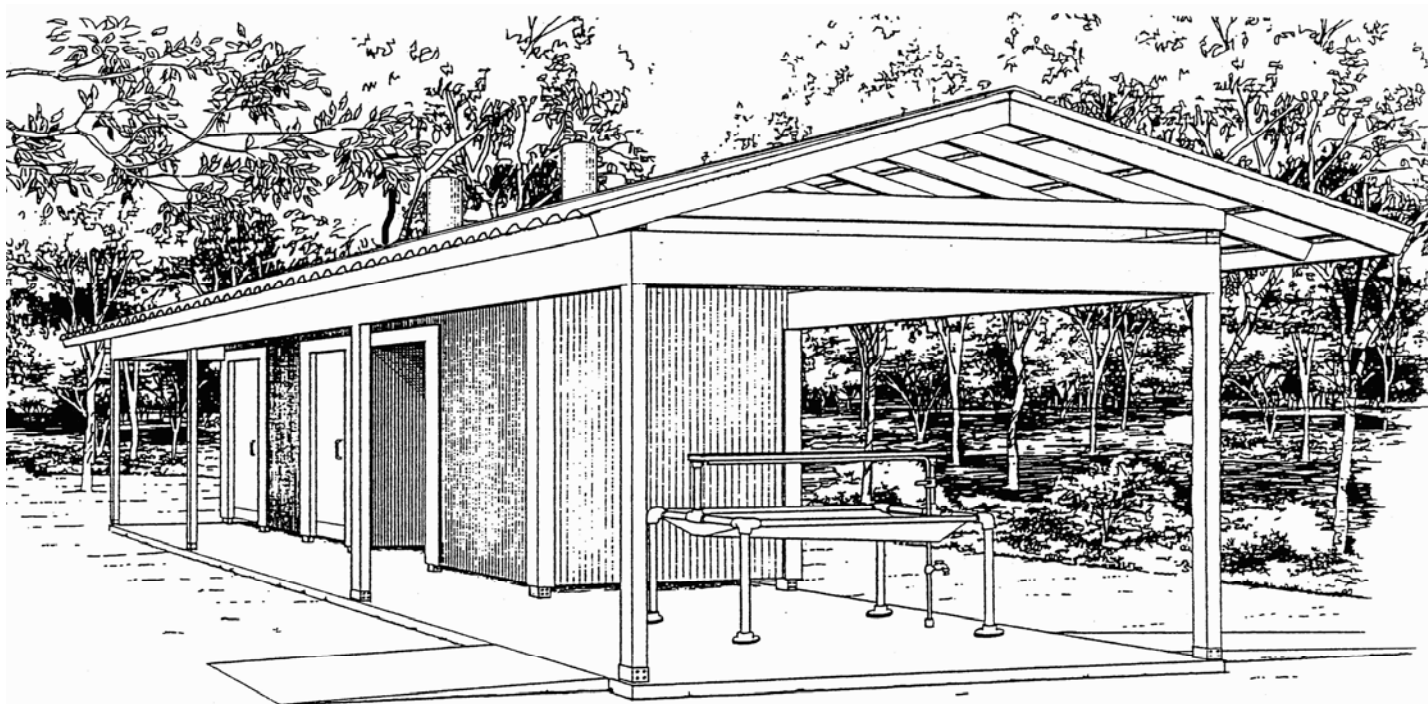




CAMPSITE WASHSTAND / LATRINE:

Supports up to 40 youths and leaders (youth / adult / male / female)

Designed to comply with Uniform Federal Accessibility Standards



This facility is designed to provide for basic campsite sanitary, hygienic and potable water needs. It is suitable for use with vault or flush toilets. Always check with local authorities before deciding which system to use.

FEATURES

- * Barrier-free accessibility
- * Two individual toilet compartments
- * Urinal compartment with 3-station trough
- * 6-station washstand
- * Drinking fountain
- * Hose bibb
- * Improved odor abatement system
- * Translucent fiberglass roof
 - Improves daytime illumination
 - Reduces insect nesting
- * Open structure Improves ventilation

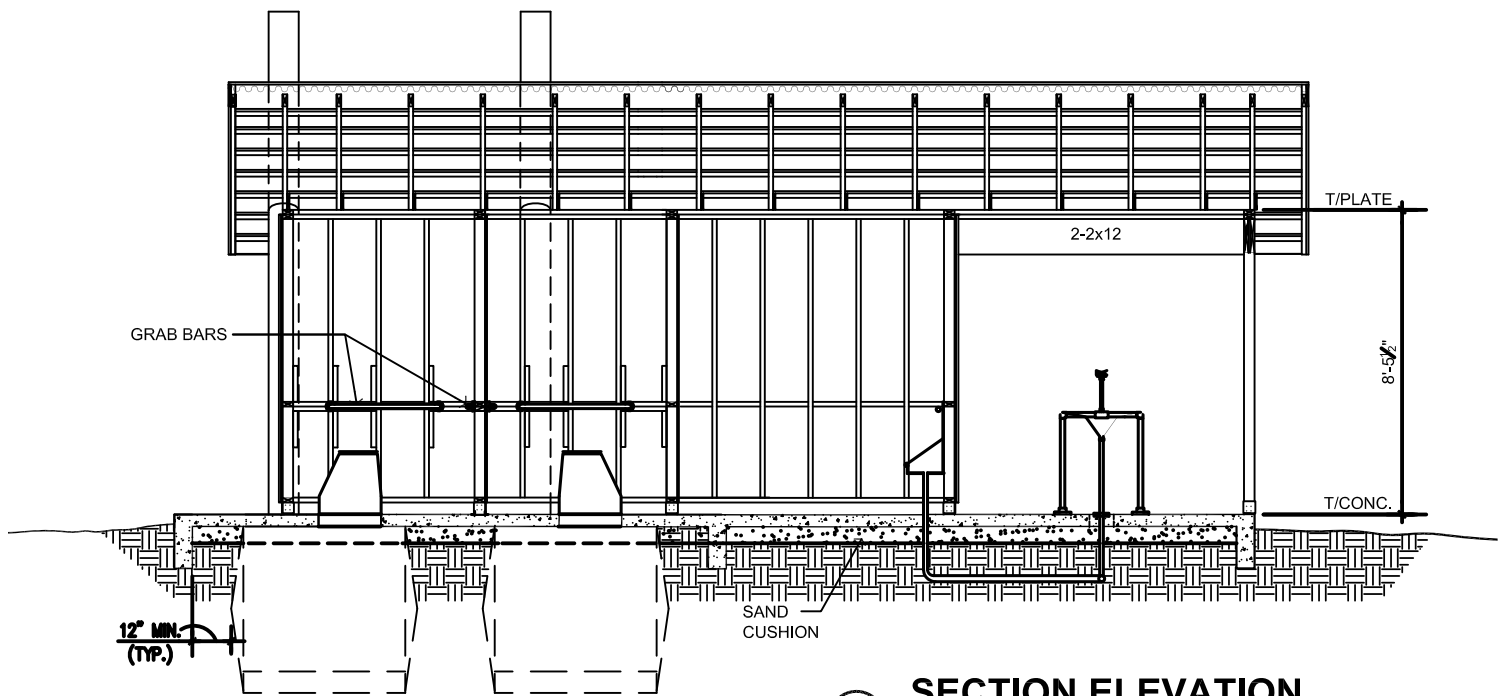
SITE REQUIREMENTS

- * Convenient to campsite
- * Surface drainage away from structure
- * Ground slope 6% maximum
- * Up-gradient from waste disposal system
- * Accessible to service vehicles

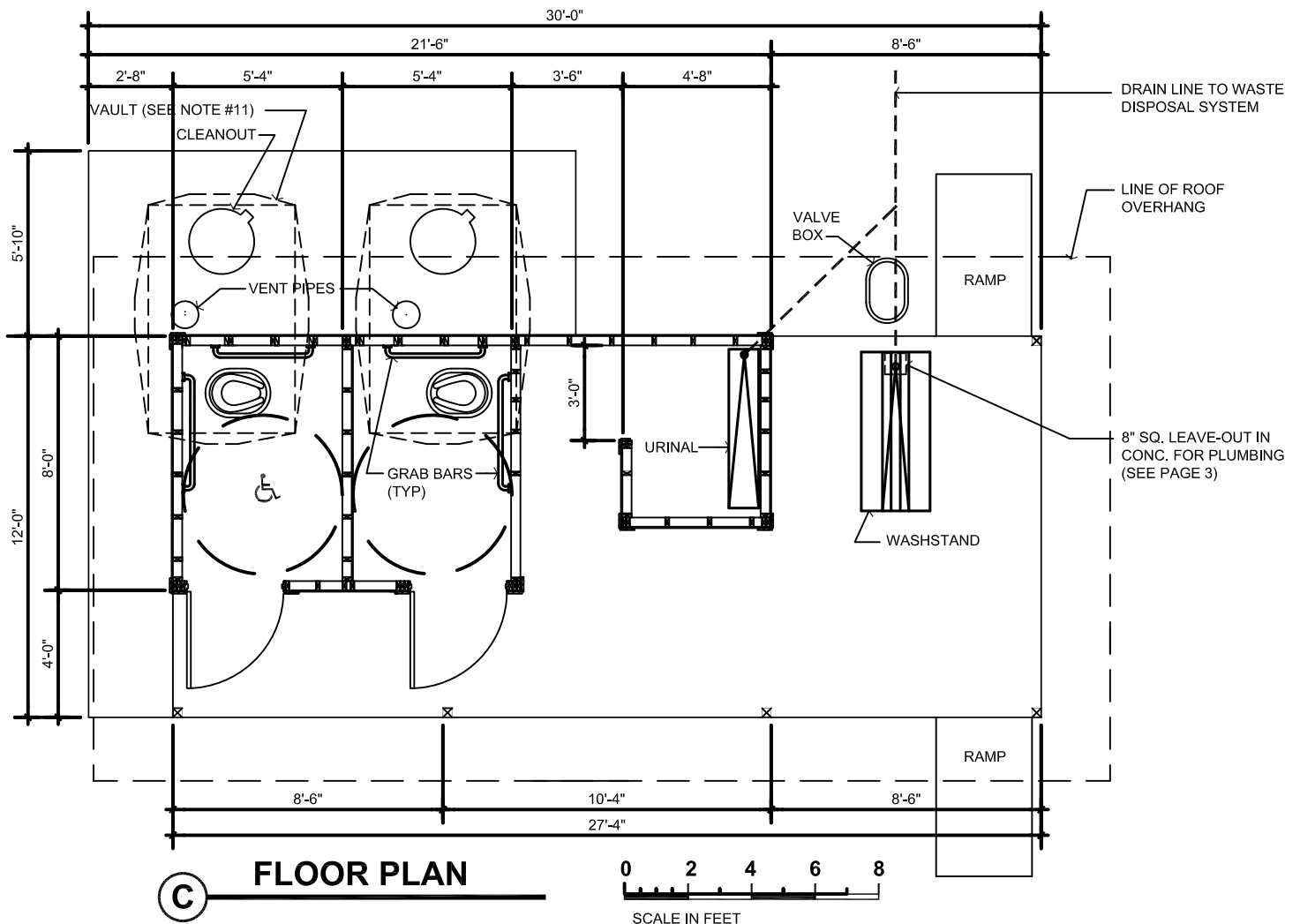
UTILITY REQUIREMENTS

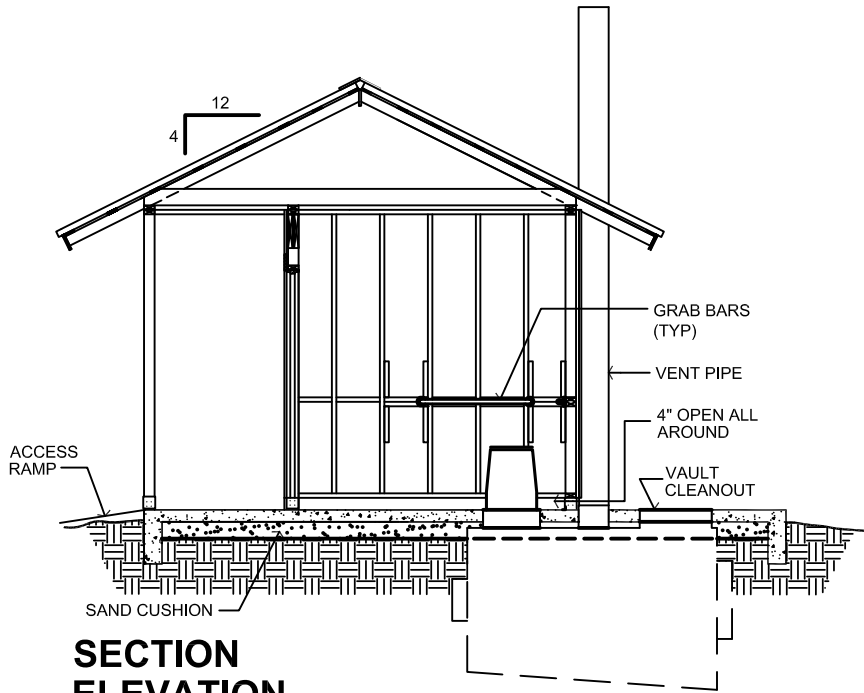
- * Potable water: 1" diameter supply, 20 PSI min
 - vault: 250 gal/day
 - flush: 650 gal/day(assumes water closet fixture type)
- * Waste:
 - vault: 200 gal/day
 - flush: 600 gal/day(40 persons x 2 flushes x 5 gal = 400 gal/day)
(plus washstand / urinal @ 200 gal/day)
- * Electrical: NONE - Electrification of this facility is not generally recommended. Considerations include risk management, pest abatement, cost control and camp aesthetics.



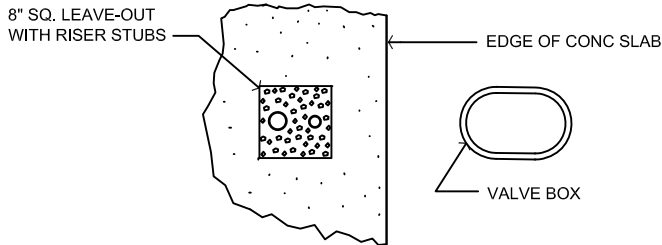


VAULT LATRINE

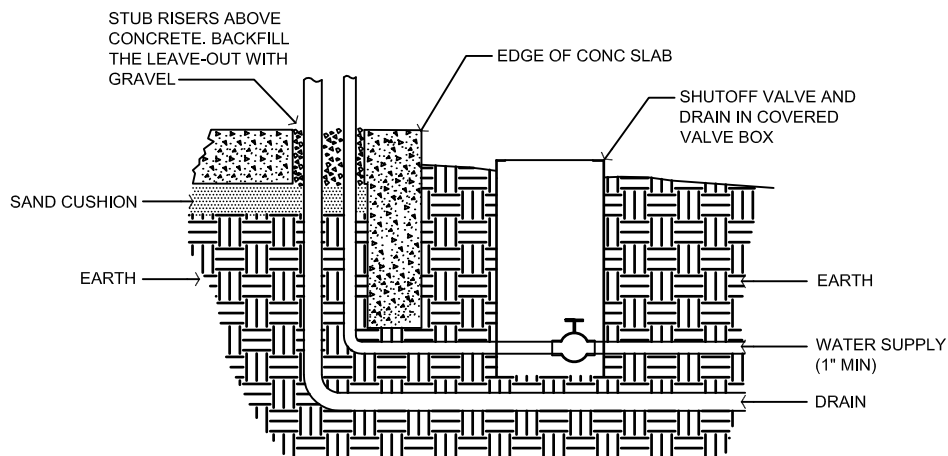




**SECTION
ELEVATION**



PARTIAL PLAN VIEW



SECTION ELEVATION

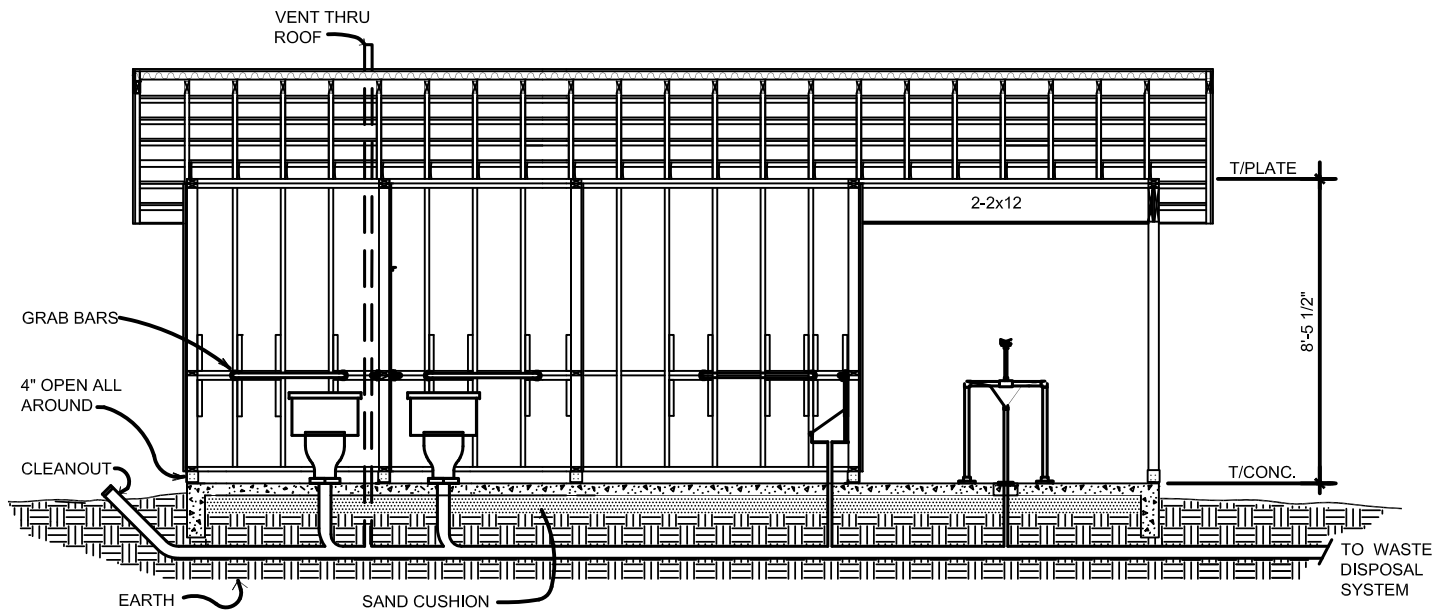
DETAIL OF LEAVE-OUT

NO SCALE

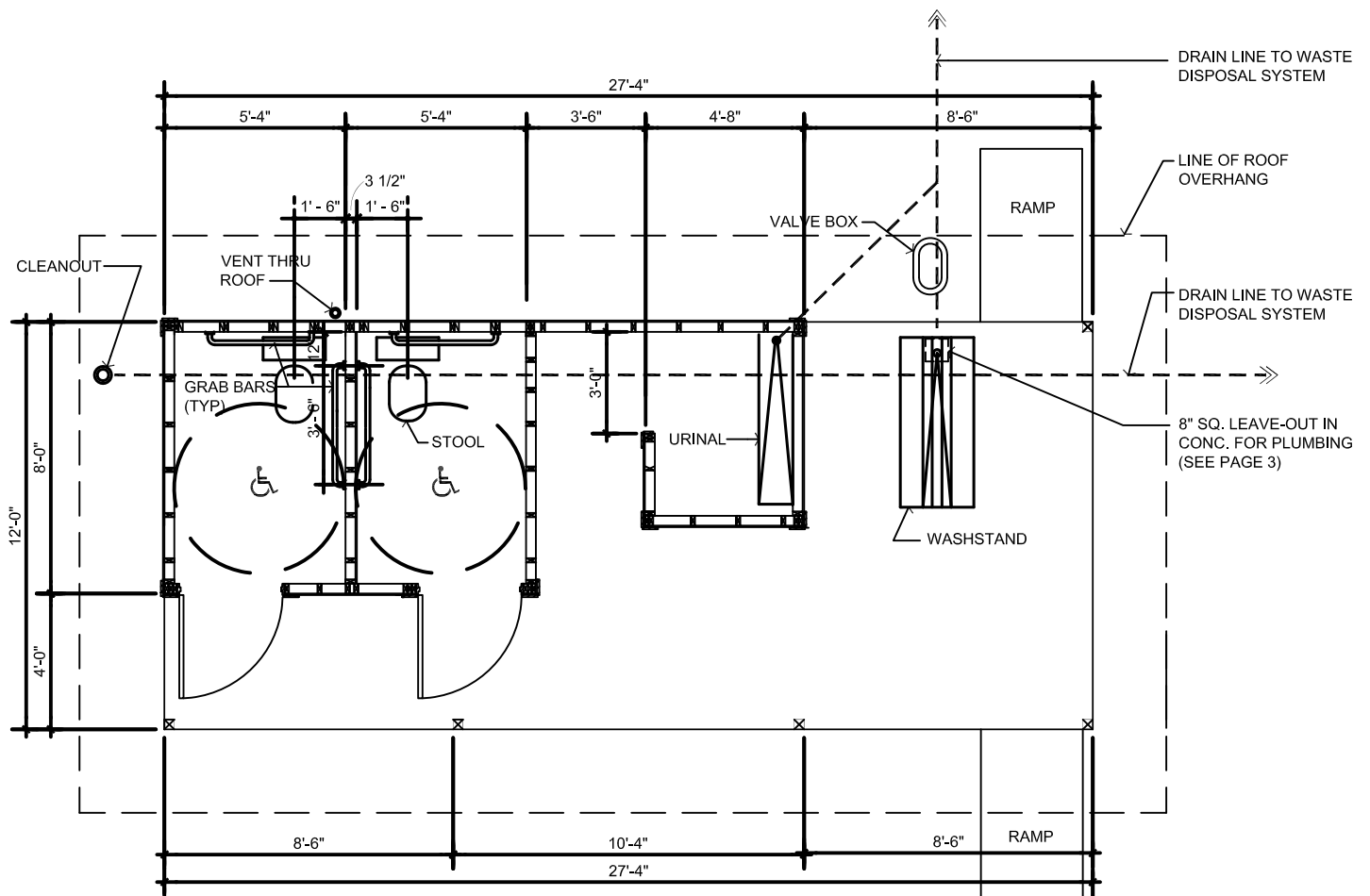
NOTES: VAULT LATRINE

1. **FRAMING / CONSTRUCTION / CONCRETE:** SEE WALL SECTION ON PAGE 6.
2. DIMENSIONS ARE TO THE EDGE OF CONCRETE, TO THE EDGE OF FRAMING OR TO THE TOP OF PLATE UNLESS OTHERWISE NOTED.
3. **DOORS:** 3'-0" X 6'-8" SOLID CORE, EXTERIOR GRADE.
4. **DOOR HARDWARE:** 1 PAIR HEAVY DUTY HINGES WITH SECURE HINGE PIN. USE 3" SCREWS. LATCH : SLIDING BOLT TYPE, HEAVY DUTY. KICKPLATE EACH SIDE.
5. **GRAB BARS:** 1-1/2" DIAMETER STAINLESS STEEL, COMMERCIAL MANUFACTURE. TWO GRAB BARS REQUIRED PER COMPARTMENT: ONE AT 36" AND ONE AT 42". MOUNT 12" FROM CORNER AS SHOWN ON FLOOR PLAN.
6. **TOILET FIXTURES:** COMPONENTS SHOWN ARE AVAILABLE FROM ROMTEC, INC.
7. **URINAL:** 60" STAINLESS STEEL OR FIBERGLAS TROUGH (SEE D-601C).
8. **WATER:** REQUIRES 1" SUPPLY AT 20 PSI (MIN). FOR DURABILITY 3/4" GALVANIZED PIPE IS RECOMMENDED FOR DISTRIBUTION LINES TO FIXTURE STUBS.
9. **HOSE BIBBS:** A VACUUM BREAKER IS REQUIRED TO PREVENT BACKFLOW.
10. **RAMPS:** REQUIRED TO BE A MINIMUM OF 36" WIDE, WITH A MAXIMUM SLOPE OF 1 : 12. SURFACE SHOULD BE BRUSH TEXTURES FOR GOOD TRACTION. LOCATION AND NUMBER OF RAMPS WILL BE DETERMINED BY SITE CONDITIONS.
11. **VAULT:** 750 GAL. POLY VAULT BY ROMTEC, INC. IS SHOWN. CHECK WITH LOCAL AUTHORITIES REGARDING REQUIREMENTS. ALWAYS DRAIN THE URINAL AND WASH STAND TO A LATERAL LINE AND NOT INTO THE VAULT, IF PERMISSIBLE.
12. **VENT SYSTEM:** 12" DIA. MINIMUM, EXTENDED AT LEAST 24" ABOVE HIGHEST ADJACENT ROOF SURFACE. COMPONENTS AS SHOWN AVAILABLE FROM ROMTEC, INC.

NOTE: NATURAL DRAFT ACTION OF THE EXHAUST FLUE CAN BE IMPROVED BY PAINTING IT'S EXTERIOR SURFACE A DARK COLOR SUCH AS BLACK, BROWN, OR GREEN.

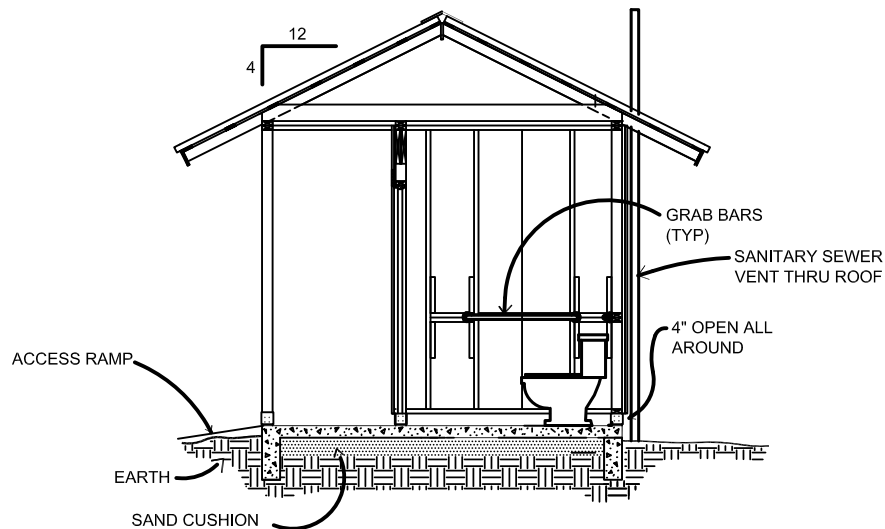


FLUSH TOILET LATRINE



(C) FLOOR PLAN

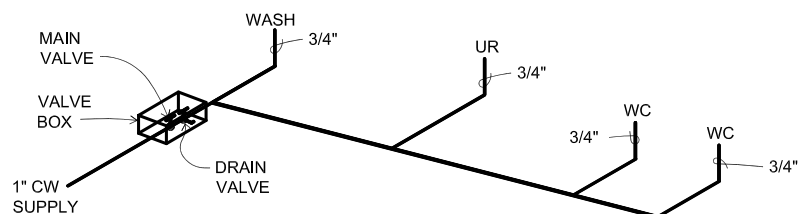




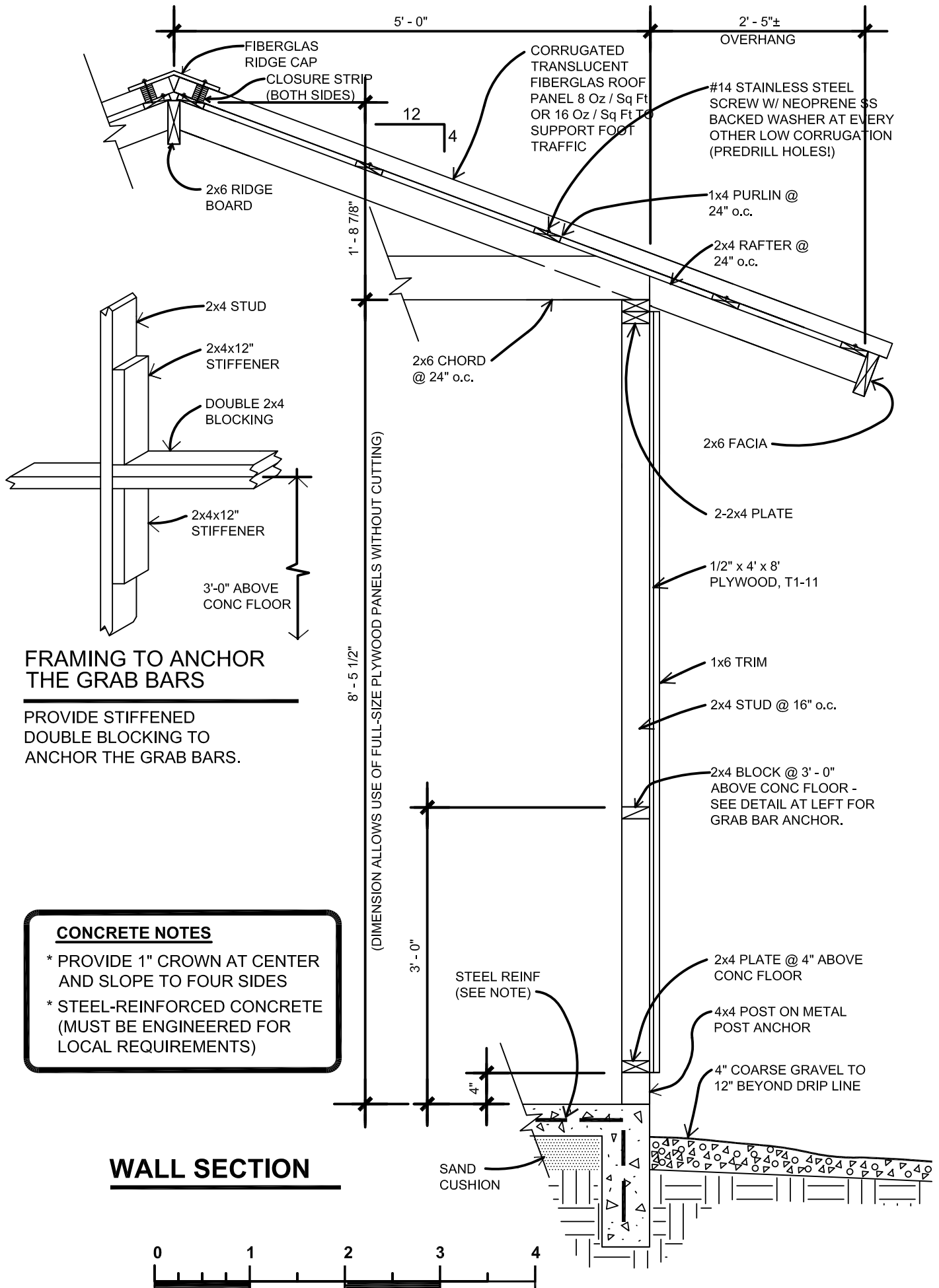
B SECTION ELEVATION

D NOTES: FLUSH TOILET LATRINE

1. **FRAMING / CONSTRUCTION / CONCRETE:** SEE WALL SECTION ON PAGE 8.
2. DIMENSIONS ARE TO THE EDGE OF CONCRETE, TO THE EDGE OF FRAMING OR TO THE TOP OF PLATE UNLESS OTHERWISE NOTED.
3. **DOORS:** 3'-0" X 6'-8" SOLID CORE, EXTERIOR GRADE.
4. **DOOR HARDWARE:** 1 PAIR HEAVY DUTY HINGES WITH SECURE HINGE PIN. USE 3" SCREWS. LATCH : SLIDING BOLT TYPE, HEAVY DUTY. KICKPLATE EACH SIDE.
5. **GRAB BARS:** 1-1/2" DIAMETER STAINLESS STEEL, COMMERCIAL MANUFACTURE. TWO GRAB BARS REQUIRED PER COMPARTMENT: ONE AT 36" AND ONE AT 42". MOUNT 12" FROM CORNER AS SHOWN ON FLOOR PLAN (SEE 601C).
6. **TOILET FIXTURES:** ELONGATED BOWL IF RECOMMENDED.
7. **URINAL:** 60" STAINLESS STEEL OR FIBERGLAS TROUGH.
8. **WATER:** REQUIRES 1" SUPPLY AT 20 PSI (MIN). FOR DURABILITY 3/4" GALVANIZED PIPE IS RECOMMENDED FOR DISTRIBUTION LINES TO FIXTURE STUBS.
9. **HOSE BIBS:** A VACUUM BREAKER IS REQUIRED TO PREVENT BACKFLOW.
10. **RAMPS:** REQUIRED TO BE A MINIMUM OF 36" WIDE, WITH A MAXIMUM SLOPE OF 1 : 12. SURFACE SHOULD BE BRUSH TEXTURES FOR GOOD TRACTION. LOCATION AND NUMBER OF RAMPS WILL BE DETERMINED BY SITE CONDITIONS.



RISER DIAGRAM



FRAMING TO ANCHOR THE GRAB BARS

PROVIDE STIFFENED DOUBLE BLOCKING TO ANCHOR THE GRAB BARS.

CONCRETE NOTES

- * PROVIDE 1" CROWN AT CENTER AND SLOPE TO FOUR SIDES
- * STEEL-REINFORCED CONCRETE (MUST BE ENGINEERED FOR LOCAL REQUIREMENTS)

WALL SECTION