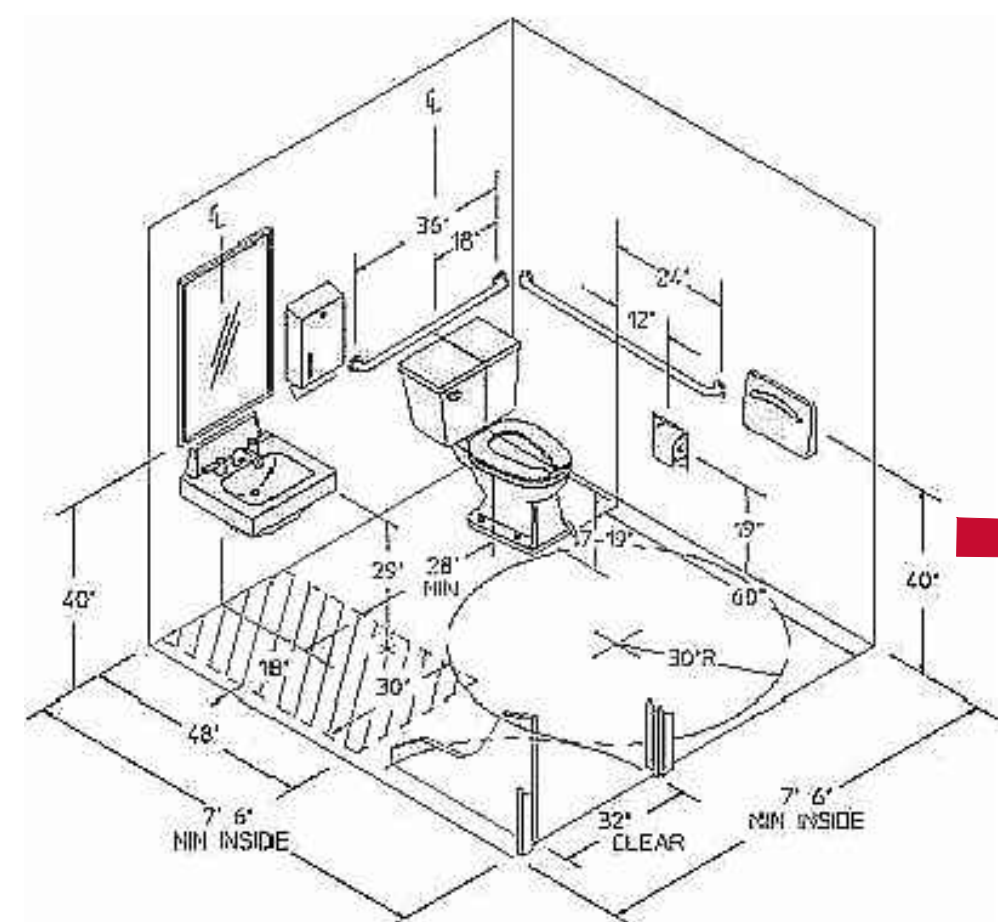


## CAMPING AND PICNIC FACILITIES

WITHIN CAMPING AND PICNIC UNITS WITH MOBILITY FEATURES, AT LEAST ONE OF EACH TYPE OF OUTDOOR CONSTRUCTED FEATURE MUST COMPLY WITH THE APPLICABLE TECHNICAL REQUIREMENTS FOR THE FEATURE. WHERE MORE THAN TWO OF THE SAME TYPE OF OUTDOOR CONSTRUCTED FEATURE ARE PROVIDED WITHIN CAMPING AND PICNIC UNITS REQUIRED TO PROVIDE MOBILITY FEATURES, AT LEAST TWO OF THE SAME TYPE OF OUTDOOR CONSTRUCTED FEATURE MUST COMPLY WITH THE APPLICABLE TECHNICAL REQUIREMENTS FOR THE FEATURE.

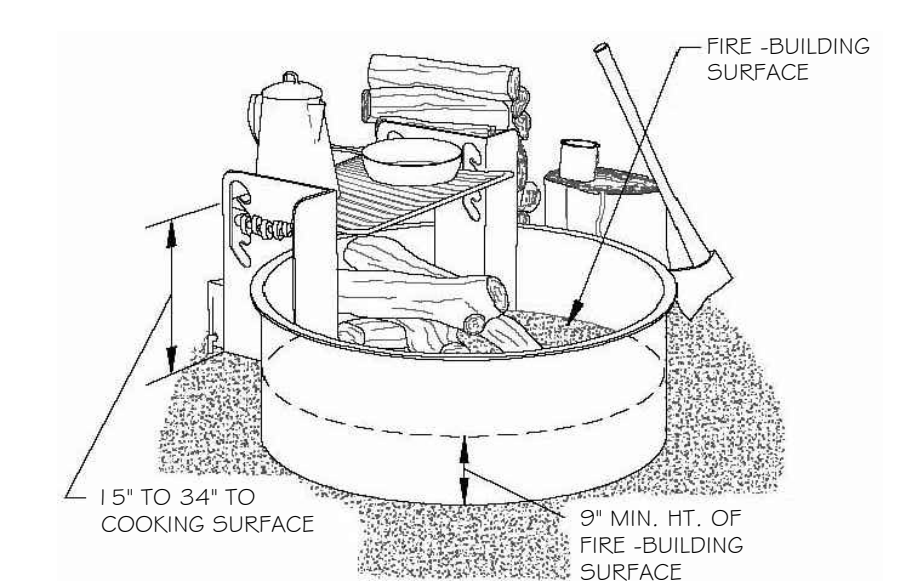
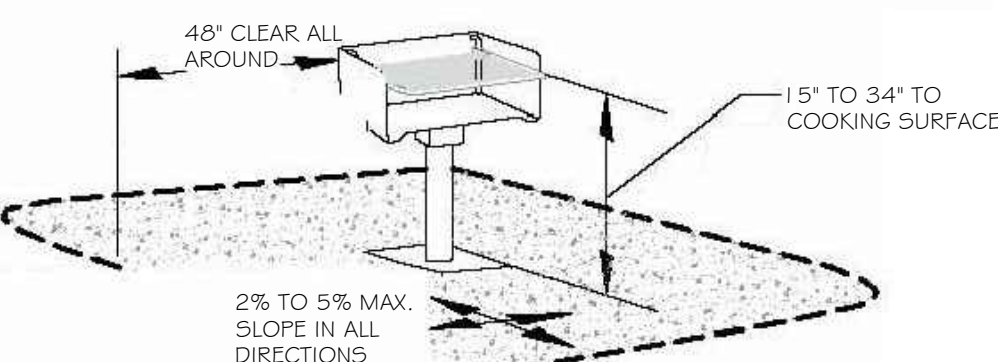
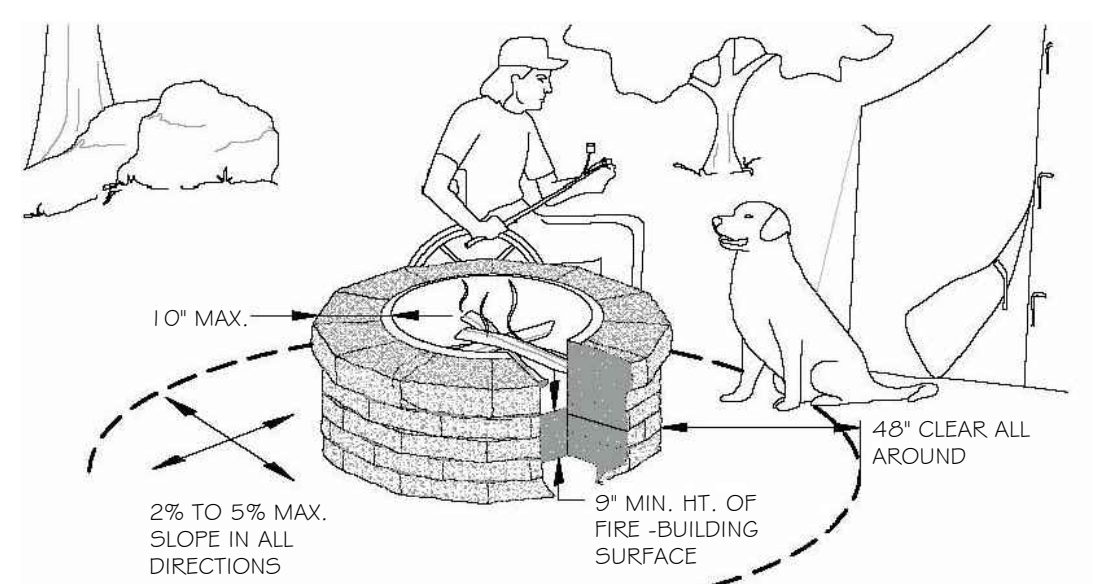
WHERE OUTDOOR CONSTRUCTED FEATURES ARE PROVIDED IN COMMON USE AND PUBLIC USE AREAS THAT SERVE CAMPING AND PICNIC UNITS WITH MOBILITY FEATURES, AT LEAST 20%, BUT NO LESS THAN ONE, OF EACH TYPE OF OUTDOOR CONSTRUCTED FEATURE MUST COMPLY WITH THE APPLICABLE TECHNICAL REQUIREMENTS FOR THE FEATURE. A CLEAR GROUND SPACE MUST BE PROVIDED AT EACH OUTDOOR CONSTRUCTED FEATURE, PROVIDE APPROPRIATE SIZE, LOCATION, SURFACE, SLOPE AND OPENINGS IN THE CLEAR GROUND SPACE AS REQUIRED.

OPERABLE PARTS OF OUTDOOR CONSTRUCTED FEATURES, SUCH AS HANDLES, LEVERS, AND LATCHES, MUST COMPLY WITH THE TECHNICAL REQUIREMENTS OF THE ADA STANDARDS, UNLESS AN EXCEPTION APPLIES.



WHEN TOILET AND BATHING FACILITIES ARE PROVIDED, THEY MUST COMPLY WITH THE SCOPING AND TECHNICAL REQUIREMENTS OF CHAPTER 6 OF THE ADA.

### LATRINE FACILITY

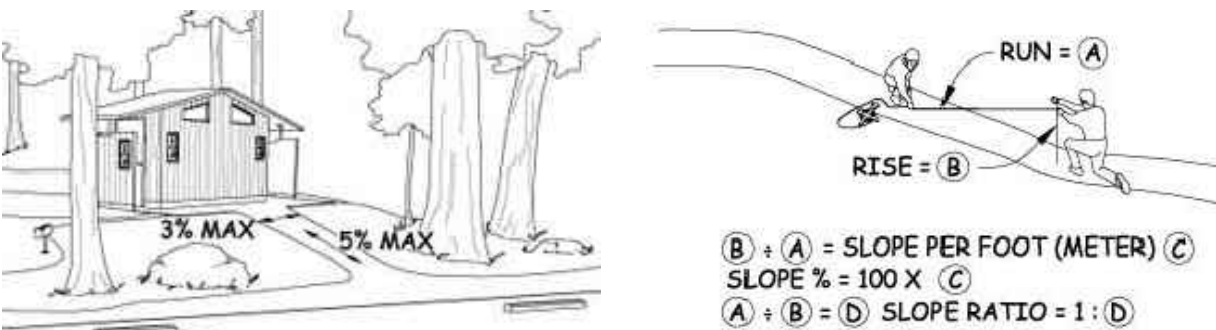


A MINIMUM OF 48" X 48" OF CLEAR GROUND SPACE MUST BE PROVIDED ON ALL LOADABLE SIDES OF FIRE RINGS, GRILLS, FIREPLACES AND WOOD STOVES. THE FIRE-BUILDING SURFACE MUST BE AT LEAST 9" ABOVE THE GROUND AND COMPLY WITH REACH RANGES REQUIREMENTS OF CHAPTER 3 OF THE ADA.

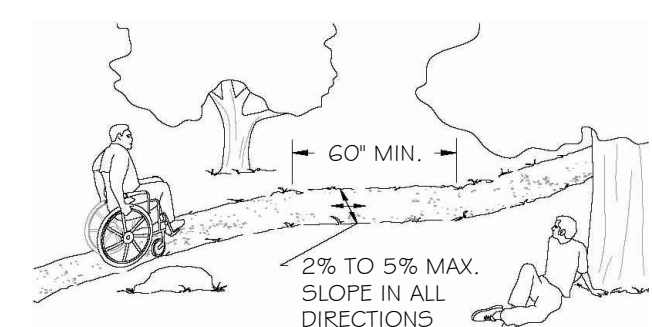
### FIRE RING / GRILLS

OUTDOOR RECREATION ACCESS ROUTES (ORARs) SHALL BE PROVIDED TO ENSURE THAT VISITORS CAN MOVE INDEPENDENTLY FROM THEIR CAMPING OR PICNIC SPOT TO THE OTHER CONSTRUCTED FEATURES PROVIDED AT THE SITE OR FROM THE PARKING AREA TO ANY CONSTRUCTED FEATURES.

ORARs ARE TO BE DESIGNED WITH A RUNNING SLOPE OF NO MORE THAN 1:20 (5%). RUNNING SLOPES OF NO MORE THAN 1:12 (8.33%) ARE PERMITTED FOR UP TO 30' AND NO MORE THAN 1:10 (10%) ARE PERMITTED FOR UP TO 30' NO MORE THAN 15% OF THE TOTAL LENGTH OF THE ORAR MAY EXCEED A SLOPE OF 1:12 (8.33%). CROSS SLOPES CAN NOT EXCEED 1:33 (3%), OR 1:20 (5%) WHERE NECESSARY FOR PROPER DRAINAGE.



RESTING INTERVALS ARE REQUIRED ANY TIME THE RUNNING SLOPE EXCEEDS 1:20 (5%) AND SHALL BE MIN. 60' LONG AND AT LEAST AS WIDE AS THE ORAR LEADING INTO IT. RESTING INTERVAL SLOPE SHALL NOT EXCEED 1:33 (3%) IN ANY DIRECTION.

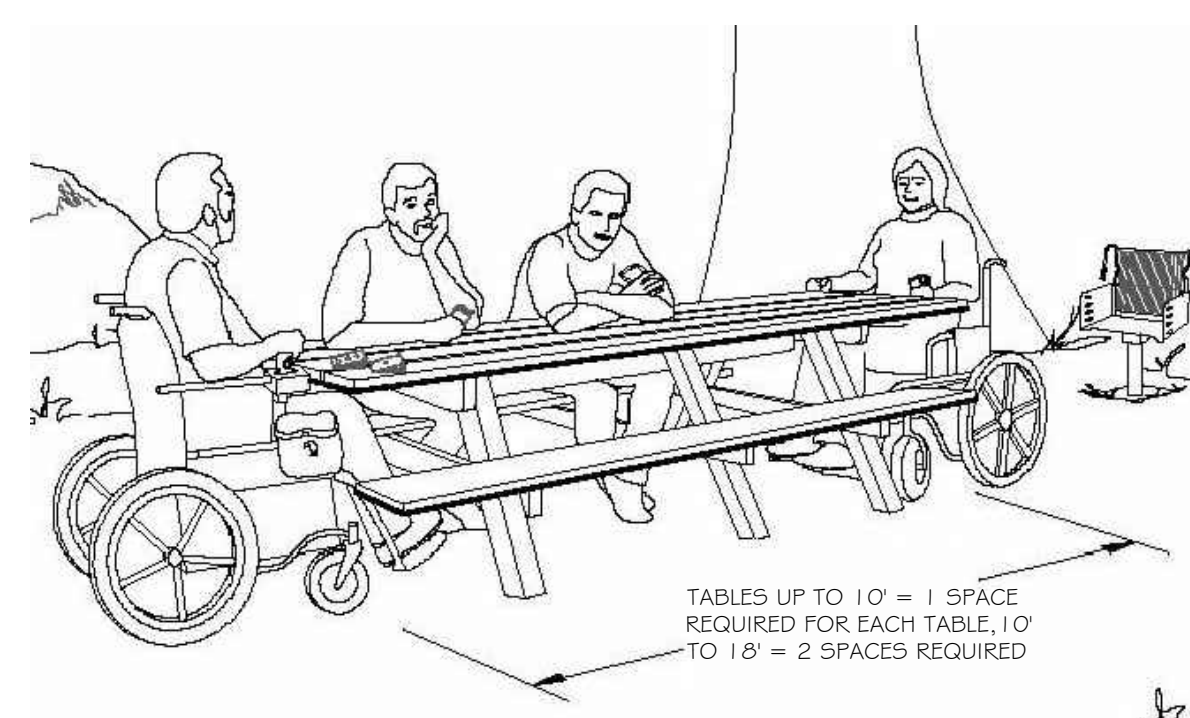
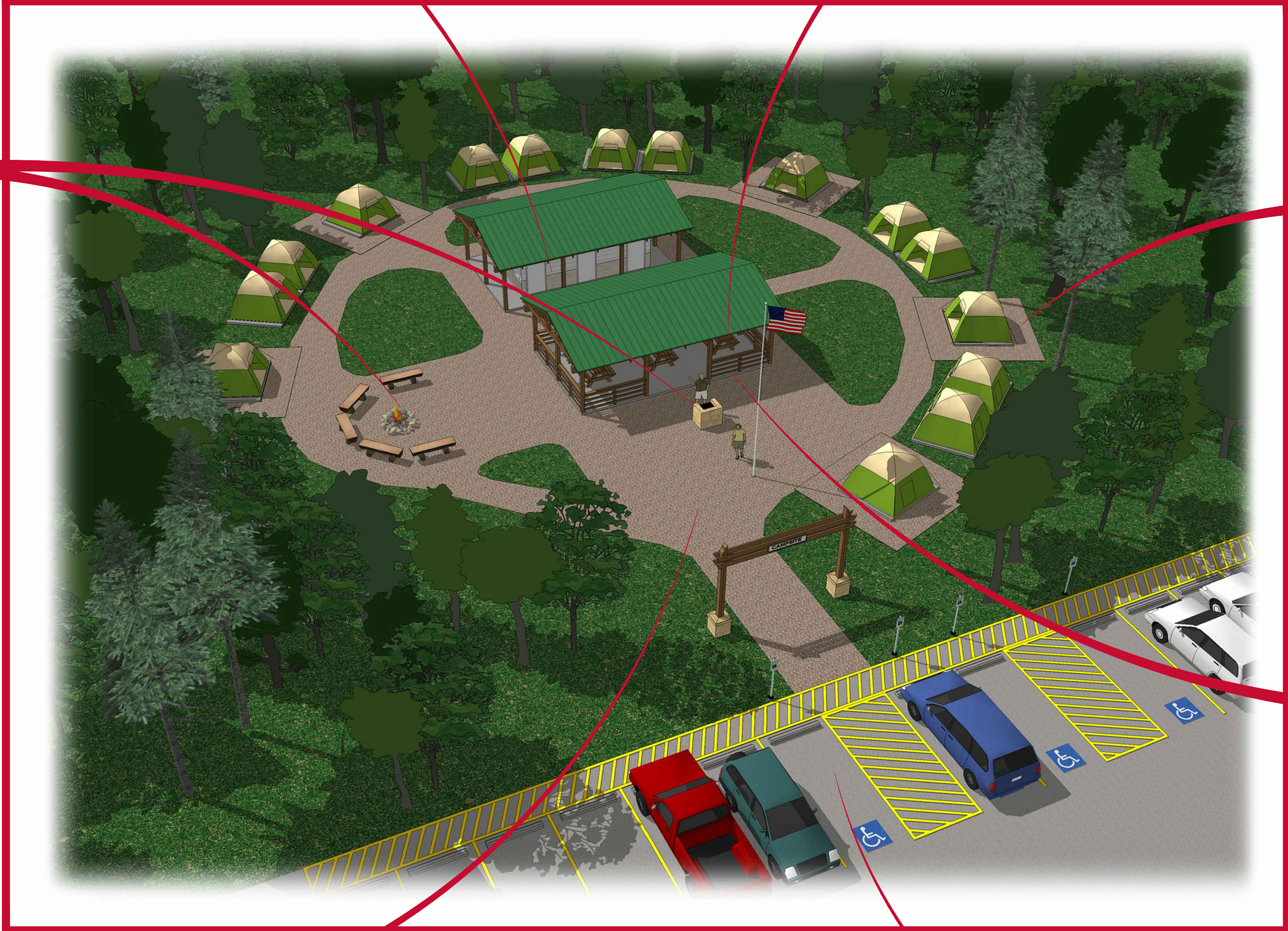


THE SURFACE OF AN ORAR AND THE SURFACE SURROUNDING CONSTRUCTED FEATURES MUST BE FIRM AND STABLE. NO EXCEPTIONS ARE ALLOWED. FIRM SURFACE SHALL NOT BE NOTICEABLY DISTORTED OR COMPRESSED BY THE PASSAGE OF A DEVICE THAT SIMULATED A PERSON USING A WHEELCHAIR. STABLE SURFACE SHALL NOT PERMANENTLY BE AFFECTED BY NORMALLY OCCURRING WEATHER CONDITIONS AND CAN SUSTAIN WEAR AND TEAR DURING NORMAL USE.

GENERALLY, THE FOLLOWING MATERIALS PROVIDE FIRM, STABLE SURFACES:

- CONCRETE OR ASPHALT
- CRUSHED ROCK (RATHER THAN UNCRUSHED GRAVEL)
- ROCK WITH BROKEN FACES (RATHER THAN ROUNDED ROCKS)
- A ROCK MIXTURE CONTAINING A FULL SPECTRUM OF SIEVE SIZES (RATHER THAN A SINGLE SIZE)
- HARD ROCK (RATHER THAN SOFT ROCK THAT BREAKS DOWN EASILY)
- ROCK THAT PASSES THROUGH A 1/2" SIEVE (RATHER THAN LARGER ROCKS)
- ROCK MATERIAL THAT HAS BEEN COMPACTED INTO 3- TO 4-INCH THICK LAYERS (RATHER THAN THICKER LAYERS)
- MATERIAL THAT IS MOIST, BUT NOT TOO WET, BEFORE IT IS COMPACTED (RATHER THAN MATERIAL THAT IS DRY)
- MATERIAL THAT IS COMPACTED WITH A VIBRATING PLATE COMPACTOR, ROLLER, OR BY HAND TAMPING (RATHER THAN MATERIAL THAT IS LAID LOOSE AND COMPACTED BY USE)

### OUTDOOR RECREATION ACCESS ROUTES

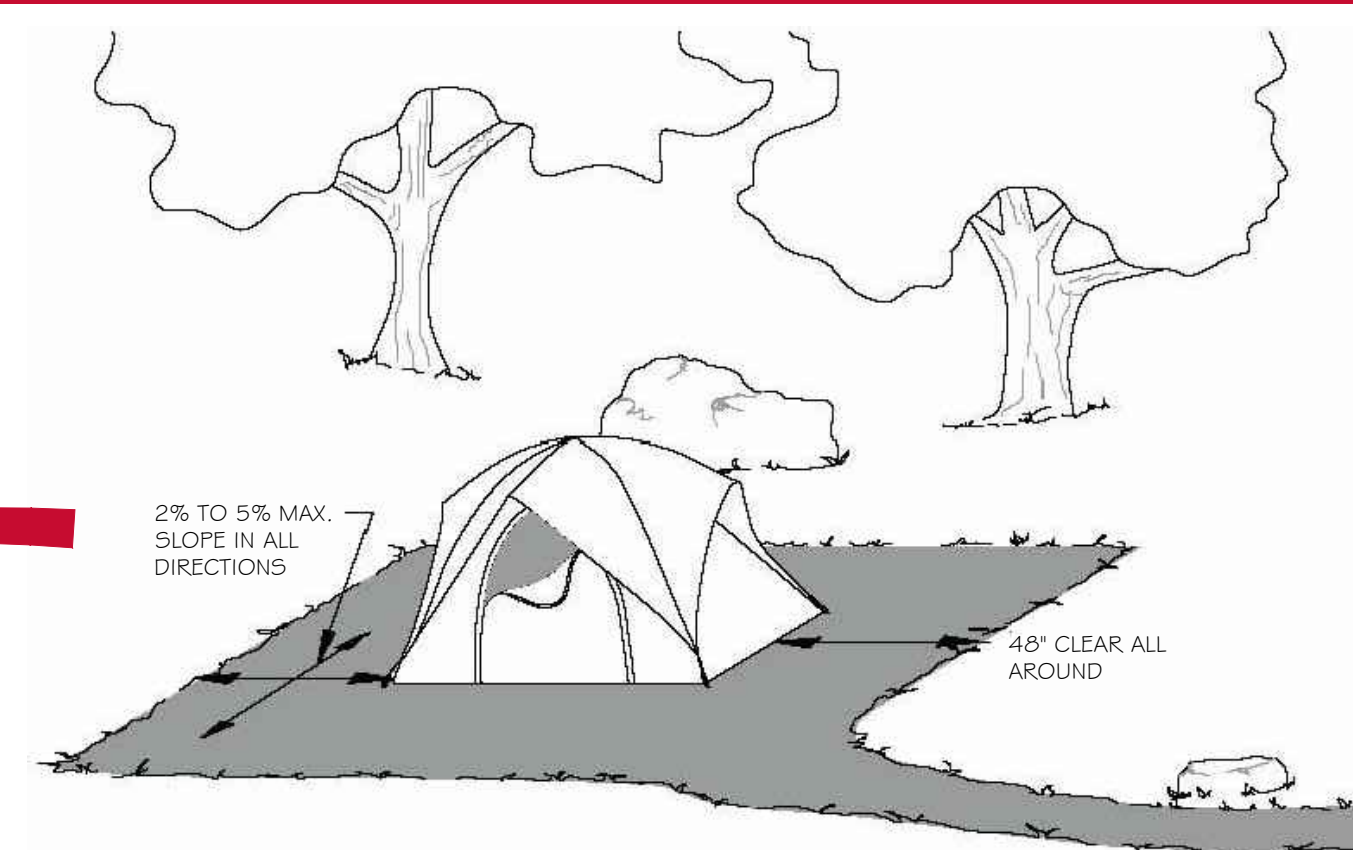


AT LEAST ONE 30" X 48" CLEAR WHEELCHAIR SPACE MUST BE PROVIDED FOR EACH 24 LINEAR FEET OF CLEAR SPACE AROUND THE PERIMETER OF THE TABLETOP.

THE WHEELCHAIR SPACE MUST BE POSITIONED FOR A FORWARD APPROACH AND PROVIDE KNEE AND TOE CLEARANCES UNDER THE TABLE WHICH COMPLIES WITH CHAPTER 5 OF ADA.

IN ADDITION TO THE CLEAR GROUND SPACE FOR EACH WHEELCHAIR, A CLEAR GROUND SPACE OF 30" MIN. MUST BE PROVIDED ON ALL USABLE SIDES OF A TABLE.

### PICNIC TABLE



TENT PADS AND TENT PLATFORMS ARE DEFINED SPACES WITH PREPARED SURFACES FOR SETTING UP AND SECURING TENTS. NO MINIMUM TENT PAD SIZE IS SPECIFIED BECAUSE THE TYPES OF TENTS COMMONLY USED IN CAMPING FACILITIES VARY. TENT PADS AND PLATFORMS MUST COMPLY WITH THE TECHNICAL REQUIREMENTS FOR CLEAR GROUND SPACE AND SLOPE AND HEIGHT.

A CLEAR GROUND SPACE OF AT LEAST 48" WIDE MUST BE PROVIDED ON ALL USABLE SIDES OF TENT PADS AND PLATFORMS TO ENABLE PEOPLE USING MOBILITY DEVICES TO SET UP AND TAKE DOWN A TENT.

WHEN THE SURFACE OF THE PAD, PLATFORM OR CLEAR GROUND SPACE IS CONSTRUCTED OF MATERIALS OTHER THAN ASPHALT, CONCRETE, OR BOARDS, THE SURFACE MUST BE NO STEEPER THAN 1:48 (2%) IN ANY DIRECTION. A SLOPE NO GREATER THAN 1:20 (5%) ARE ALLOWED WHEN NECESSARY FOR DRAINAGE.

IF PLATFORM FLOOR IS RAISED ABOVE THE GRADE, THE FLOOR HEIGHT MUST BE NO MORE THAN 18" WHEN MEASURED FROM THE CLEAR GROUND SPACE TO THE TENT PLATFORM SURFACE TO ALLOW PEOPLE USING MOBILITY DEVICES TO TRANSFER FROM THE DEVICE TO THE PLATFORM.

### TENT PAD / PLATFORM

A CAMP SHELTER IS A PARTIALLY ENCLOSED STRUCTURE THAT PROVIDES CAMPERS AND HIKERS COVER FROM WEATHER AND THAT DOES NOT CONTAIN PLUMBING FIXTURES OR KITCHEN APPLIANCES. CAMP SHELTERS ARE NOT CABINS, WHICH ARE TYPICALLY LARGER AND MUST COMPLY WITH THE ADA STANDARDS FOR TRANSIENT LODGING.

CAMP SHELTERS MUST PROVIDE EITHER TRANSFER ACCESS OR ROLL-IN ACCESS AT THE ENTRANCE, PROVIDING SHELTERS WITH ROLL-IN ACCESS ENABLES PEOPLE USING MOBILITY DEVICES TO ALSO SHELTER THE DEVICE.

TO PROVIDE TRANSFER ACCESS AT THE ENTRANCE TO A CAMP SHELTER, A CLEAR GROUND SPACE AT LEAST 36" X 48", POSITIONED FOR A PARALLEL APPROACH MUST BE PROVIDED ALONG THE OPEN SIDE OF THE CAMP SHELTER. ONE FULL, UNOCCUPIED SIDE OF THE CLEAR GROUND SPACE MUST ADJOIN OR OVERLAP AN ORAR OR TRAIL, AS APPLICABLE, OR ANOTHER CLEAR GROUND SPACE. THE SURFACE OF THE CLEAR GROUND SPACE MUST BE FIRM AND STABLE. WHEN THE SURFACE OF THE CLEAR GROUND SPACE IS CONSTRUCTED OF ASPHALT, CONCRETE, OR BOARDS, SLOPES NO STEEPER THAN 1:48 (2%) IN ANY DIRECTION. WHEN THE SURFACE OF THE CLEAR GROUND SPACE IS CONSTRUCTED OF MATERIALS OTHER THAN ASPHALT, CONCRETE, OR BOARDS, SLOPES NO STEEPER THAN 1:20 (5%) ARE ALLOWED WHEN NECESSARY FOR DRAINAGE.

THE CAMP SHELTER FLOOR AT THE ENTRANCE OR OPENING MUST BE NO HIGHER THAN 18" WHEN MEASURED FROM THE CLEAR GROUND SPACE. THIS ENABLES PEOPLE USING MOBILITY DEVICES TO ROLL ALONGSIDE OF THE SHELTER AND TRANSFER FROM MOBILITY DEVICE TO THE SHELTER FLOOR. FOR PEOPLE USING POWER MOBILITY DEVICES, RAISED FLOOR SHELTERS THAT PROVIDE TRANSFER ACCESS MAY MAKE IT DIFFICULT TO BRING THE MOBILITY DEVICE INTO THE SHELTER TO PROTECT IT FROM THE WEATHER.

TO PROVIDE ROLL-IN ACCESS INTO A CAMP SHELTER, A LEVEL OR SLOPED ENTRY ROUTE THAT COMPLES WITH THE TECHNICAL REQUIREMENTS FOR AN ORAR OR TRAIL, AS APPLICABLE, MUST BE PROVIDED ALONG THE OPEN SIDE OF THE CAMP SHELTER. SLOPE OF ENTRY ROUTE SHALL BE NO GREATER THAN 1:48 (2%) IN ANY DIRECTION.

HANDRAILS AND EDGE PROTECTIONS ARE NOT REQUIRED ON SLOPED ENTRY INTO A CAMP SHELTER BUT MAY BE USEFUL TO PEOPLE WITH AND WITHOUT DISABILITIES.

WHEN ROLL-IN ACCESS IS PROVIDED, A TURNING SPACE AT LEAST 60" IN DIAMETER OR A T-SHAPED SPACE WITH AN ARM AT LEAST 60" X 36" AND A BASE AT LEAST 36" WIDE AND 24" LONG MUST BE PROVIDED INSIDE THE CAMP SHELTER.

THE FLOOR SURFACE WITHIN A CAMP SHELTER MUST BE FIRM AND STABLE. WHEN THE FLOOR SURFACE IS CONSTRUCTED OF ASPHALT, CONCRETE, OR BOARDS, THE SLOPE OF THE FLOOR SURFACE MUST BE NO STEEPER THAN 1:48 (2%) IN ANY DIRECTION, REGARDLESS OF THE TYPE OF ACCESS PROVIDED (SLOPED ENTRY OR TRANSFER ACCESS). WHEN THE FLOOR IS CONSTRUCTED OF MATERIALS OTHER THAN ASPHALT, CONCRETE, OR BOARDS, SLOPES NO STEEPER THAN 1:20 (5%) ARE ALLOWED WHEN NECESSARY FOR DRAINAGE.

### CAMP SHELTERS / PAVILIONS

THE SURFACE OF PARKING SPACES MUST BE FIRM AND STABLE. WHEN THE SURFACE IS CONSTRUCTED OF ASPHALT, CONCRETE, OR BOARDS, THE SLOPE OF THE FLOOR SURFACE MUST BE NO STEEPER THAN 1:48 (2%) IN ANY DIRECTION, REGARDLESS OF THE TYPE OF ACCESS PROVIDED (SLOPED ENTRY OR TRANSFER ACCESS). WHEN THE FLOOR IS CONSTRUCTED OF MATERIALS OTHER THAN ASPHALT, CONCRETE, OR BOARDS, SLOPES NO STEEPER THAN 1:20 (5%) ARE ALLOWED WHEN NECESSARY FOR DRAINAGE.

PARKING SPACES FOR VEHICLES OTHER THAN RVs MUST BE AT LEAST 16' WIDE. PARKING SPACES AT LEAST 16' WIDE CAN ACCOMMODATE VANS EQUIPPED WITH A LIFT OR RAMP.

WHEN TWO ADJACENT PARKING SPACES (OTHER THAN RVs) ARE PROVIDED, ONE OF THE PARKING SPACES IS PERMITTED TO BE AT LEAST 8' WIDE.

PARKING SPACES WITHIN CAMPING UNITS WITH MOBILITY FEATURES DO NOT HAVE TO BE STRIPED OR IDENTIFIED BY THE INTERNATIONAL SYMBOL OF ACCESSIBILITY.

### PARKING SPACES

© Boy Scouts of America  
This document is for conceptual purposes only. It is provided for local BSA council use only for that purpose. The BSA is not responsible and disclaims any liability for any other use or for any change or alteration.